

PROVIDENCE, R.I.  
CITY ENGINEER'S OFFICE  
STREET LINE DEPT.  
June 15, 1897  
026626

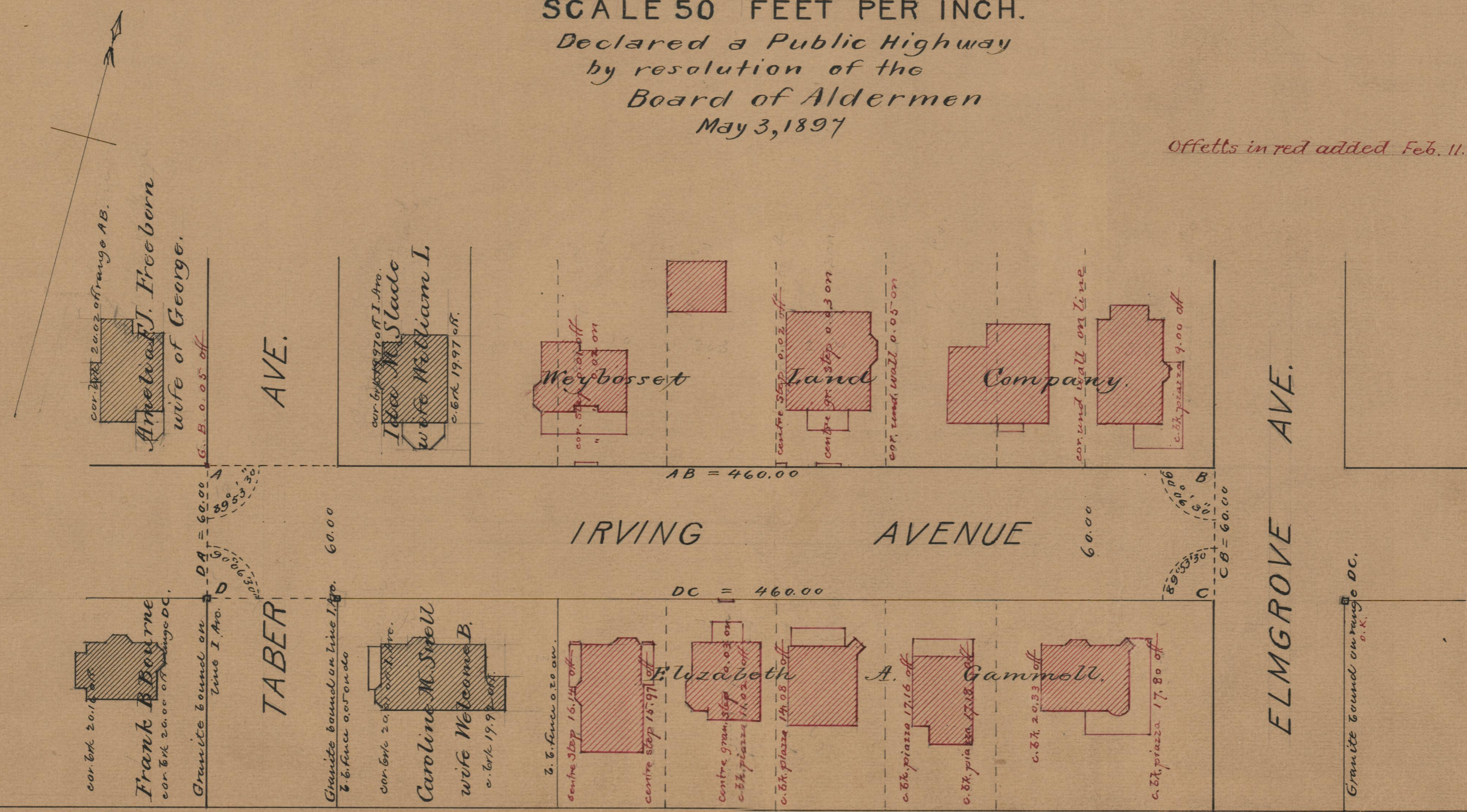
Note, The lines of Irving ave.  
defined hereon, agree with the  
deeds conveying the same, and  
recorded in the office of the re-  
corder of deeds in deed book  
365, page 270, deed book 410,  
page 357 and deed book 411,  
pages 374 and 378.

# PLAT OF IRVING AVENUE

FROM WESTERLY LINE OF TABER AVE. TO  
WESTERLY LINE OF ELMGROVE AVE.

SCALE 50 FEET PER INCH.  
Declared a Public Highway  
by resolution of the  
Board of Aldermen  
May 3, 1897

Offsets in red added Feb. 11, 1920



OFFICE No. 13538  
DRAWER " 75  
SHEET A-16