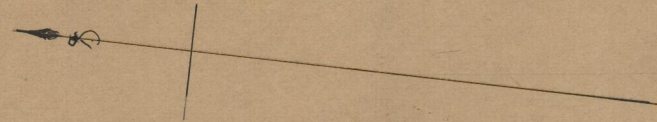


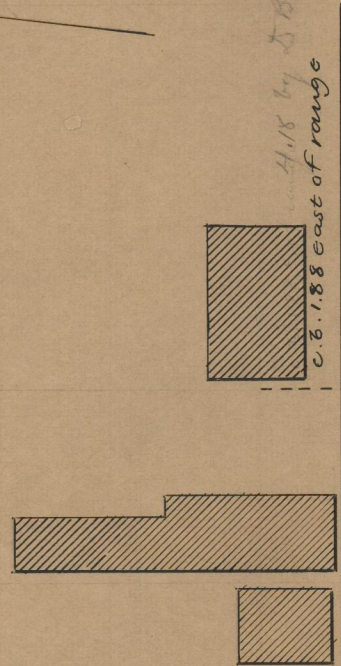
May 13, 1897

026440

PLAT OF
ROGER STREET
FROM POWER ST. TO WILLIAMS ST.
SCALE 50 FEET PER INCH.

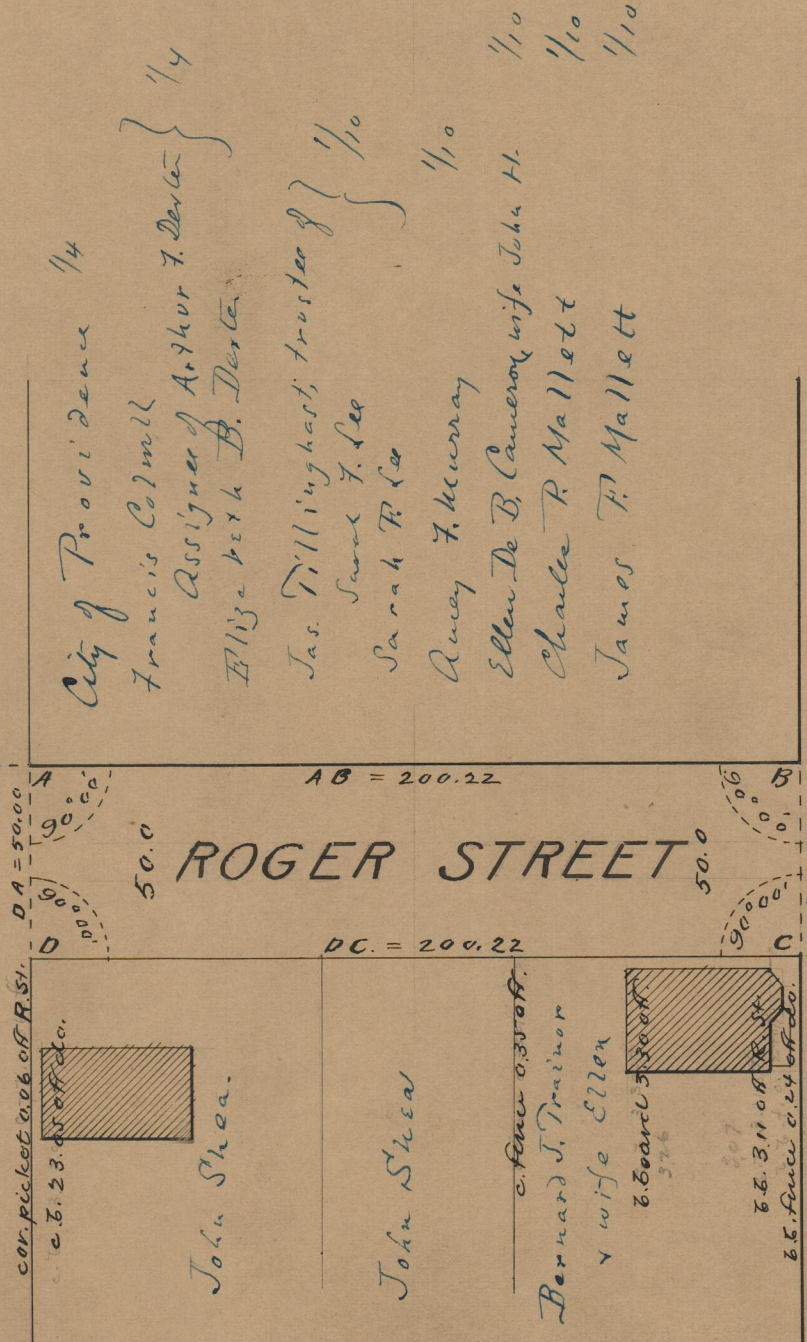


4.18 by 5.18 9 July 1904
c. B. 188 east of range



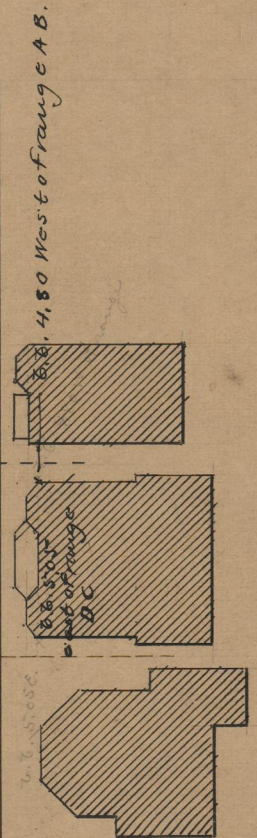
POWER ST.

POWER



WILLIAMS ST.

WILLIAMS



OFFICE No. 13480
DRAWER " 75
SHEET " A-14