

IN THREE SHEETS
SHEET TWO

PROVIDENCE, R.I.
CITY ENGINEER'S OFFICE
STREET LINE DEPT.
Oct. 21, 1896

025697

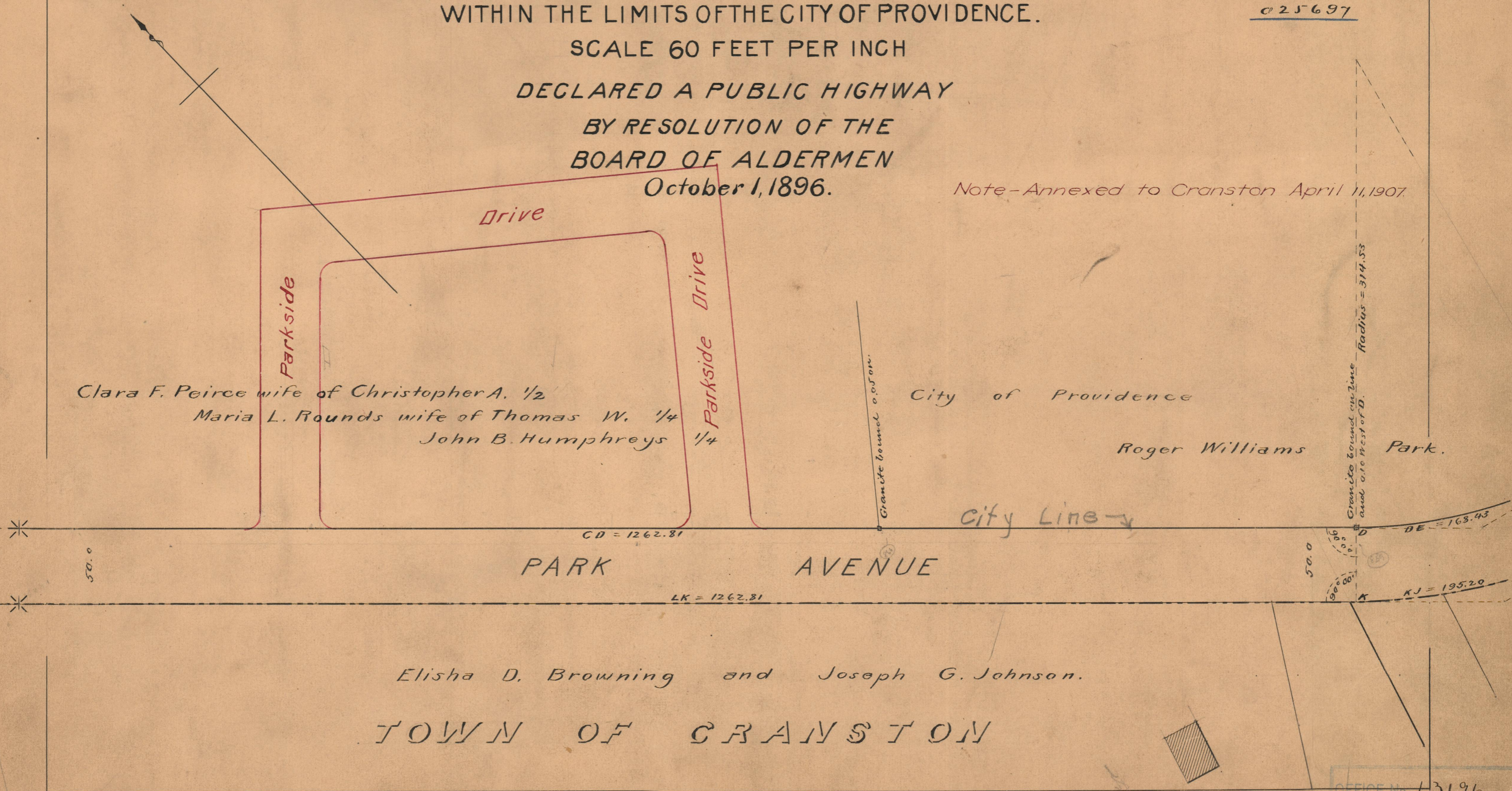
Note, The lines of Park Avenue indicated by the letters ABCD etc. correspond with the deeds on record in the Town Clerk's office in Cranston in deed book 69 pages 77, 91 and 92.

MAP OF THE PORTION OF
PARK AVENUE
WITHIN THE LIMITS OF THE CITY OF PROVIDENCE.

SCALE 60 FEET PER INCH

DECLARED A PUBLIC HIGHWAY
BY RESOLUTION OF THE
BOARD OF ALDERMEN
October 1, 1896.

Note - Annexed to Cranston April 11, 1907.



Clara F. Peirce wife of Christopher A. 1/2
Maria L. Rounds wife of Thomas W. 1/4
John B. Humphreys 1/4

City of Providence
Roger Williams Park.

Elisha D. Browning and Joseph G. Johnson.
TOWN OF CRANSTON

OFFICE No. 13196
DRAWER " 75
SHEET A-9