

IN THREE SHEETS
SHEET ONE

DBF-I-118-21

Note The lines of Park Avenue indicated by the letters ABCD &c correspond with the deeds on record in the Town Clerk's office in Cranston in deed book 69, pages 77, 91 and 92.

PROVIDENCE, R.I.
CITY ENGINEER'S OFFICE
STREET LINE DEPT.
Oct. 21, 1896
025696

MAP OF THE PORTION OF
PARK AVENUE
WITHIN THE LIMITS OF THE CITY OF PROVIDENCE.

SCALE 60 FEET PER INCH.

DECLARED A PUBLIC HIGHWAY
BY RESOLUTION OF THE
BOARD OF ALDERMEN
October 1, 1896.

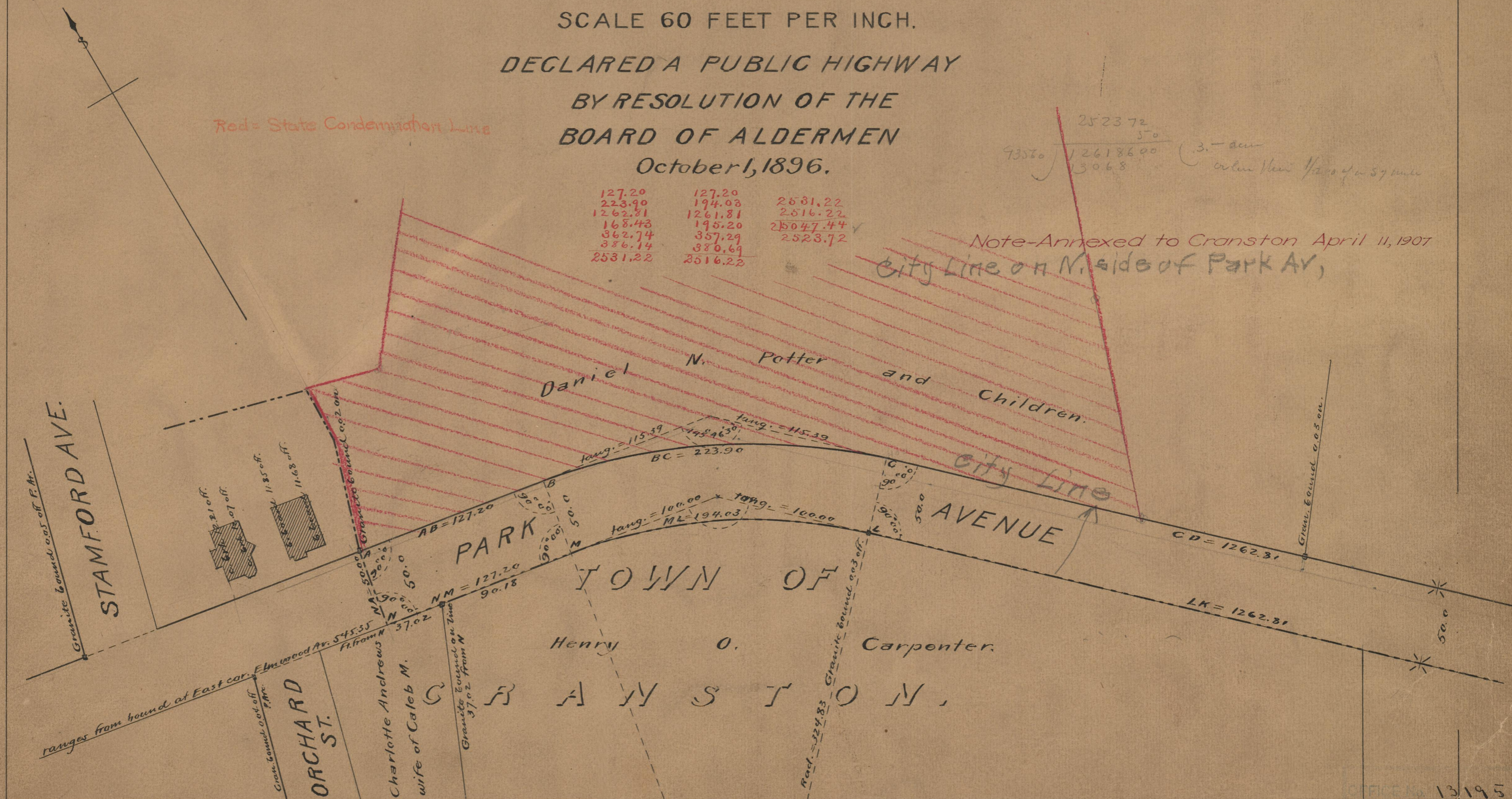
Red = State Condemnation Line

2523.72
93580 / 26186.00
13068
3. - ac
or less than 1/20 of a square mile

127.20	127.20	2531.22
223.90	194.03	2516.22
1262.81	1261.81	25047.44
168.43	195.20	2523.72
362.74	357.29	
386.14	380.69	
2531.22	2516.22	

Note-Annexed to Cranston April 11, 1907

City Line on N. side of Park Av.



OFFICE No 13195
DRAWER 75
A-8