

PROVIDENCE, R.I.
CITY ENGINEER'S OFFICE
STREET LINE DEPT.
Dec. 19, 1896.
026074

Note The lines ABCD include
land conveyed to the city for
highway purposes by various
deeds.

PLAT OF ARLINGTON AVENUE

FROM LLOYD ST. TO OLNEY ST.
the Northernly line of

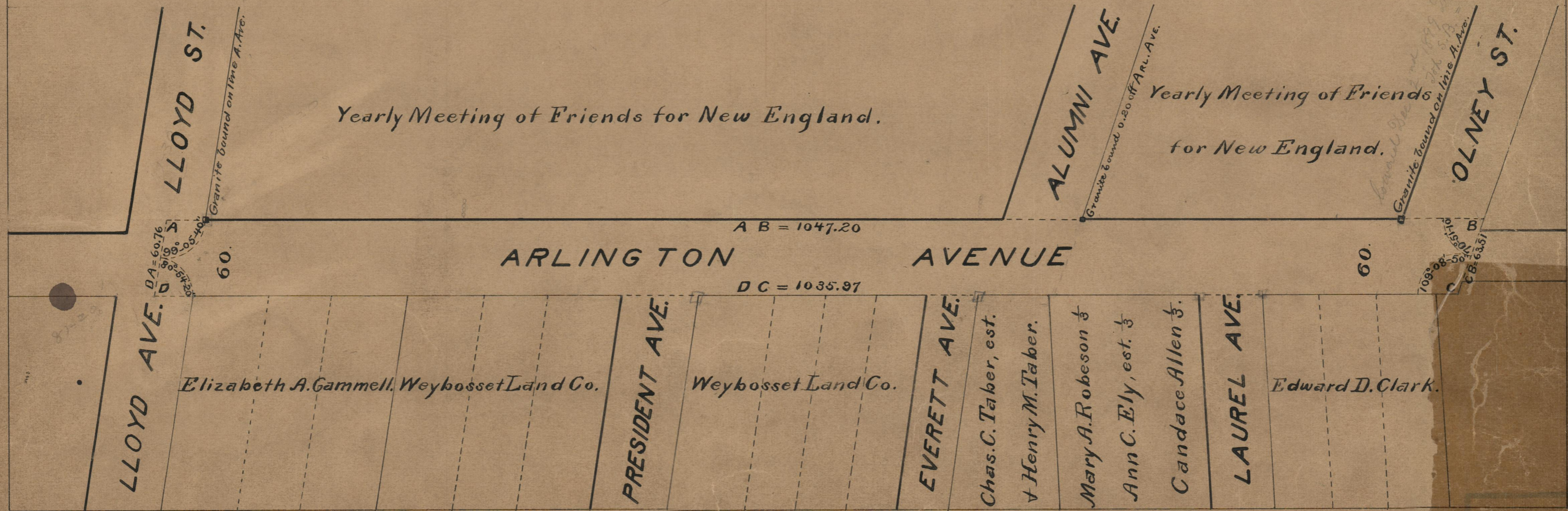
SCALE 80 FEET PER INCH

DECLARED A PUBLIC HIGHWAY
BY RESOLUTION OF THE
BOARD OF ALDERMEN

November 19, 1896.

See DB 404-492
365-79-270
407-285

1047.20
1035.97
22083.17
1041.58



OFFICE NO. 13353
DRAWN BY 75
SCALE A-6