

PROVIDENCE, R.I.
CITY ENGINEER'S OFFICE
STREET LINE DEPT.

Mar. 5, 1897

026219

PLAT OF COLUMBIA AVENUE

FROM BROAD ST. TO R.W. PARK.

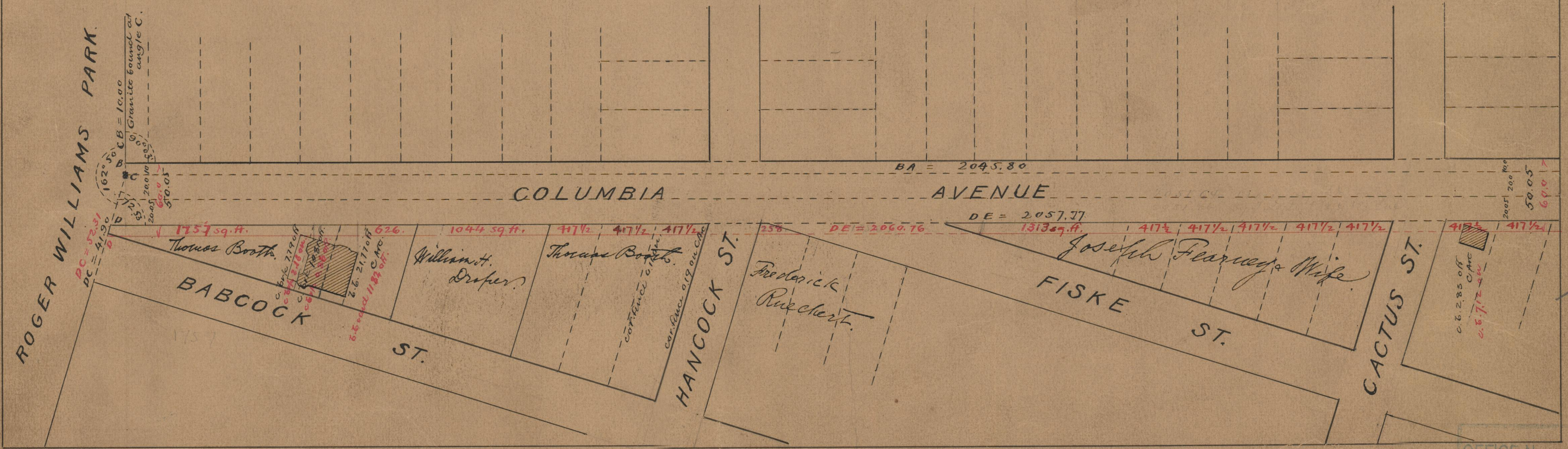
IN TWO SHEETS

SCALE 80 FEET PER INCH.

*The red line was not adopted;
use black lines, 50.05 feet wide.*

Changed to Verndale Ave, Mar. 6, 1905,

2045.80	2045.80
2060.76	2057.77
24196.56	24103.57
2058.28	2051.78



75
A-4

OFFICE No. 13395
DRAWER " 75
SHEET A-4