

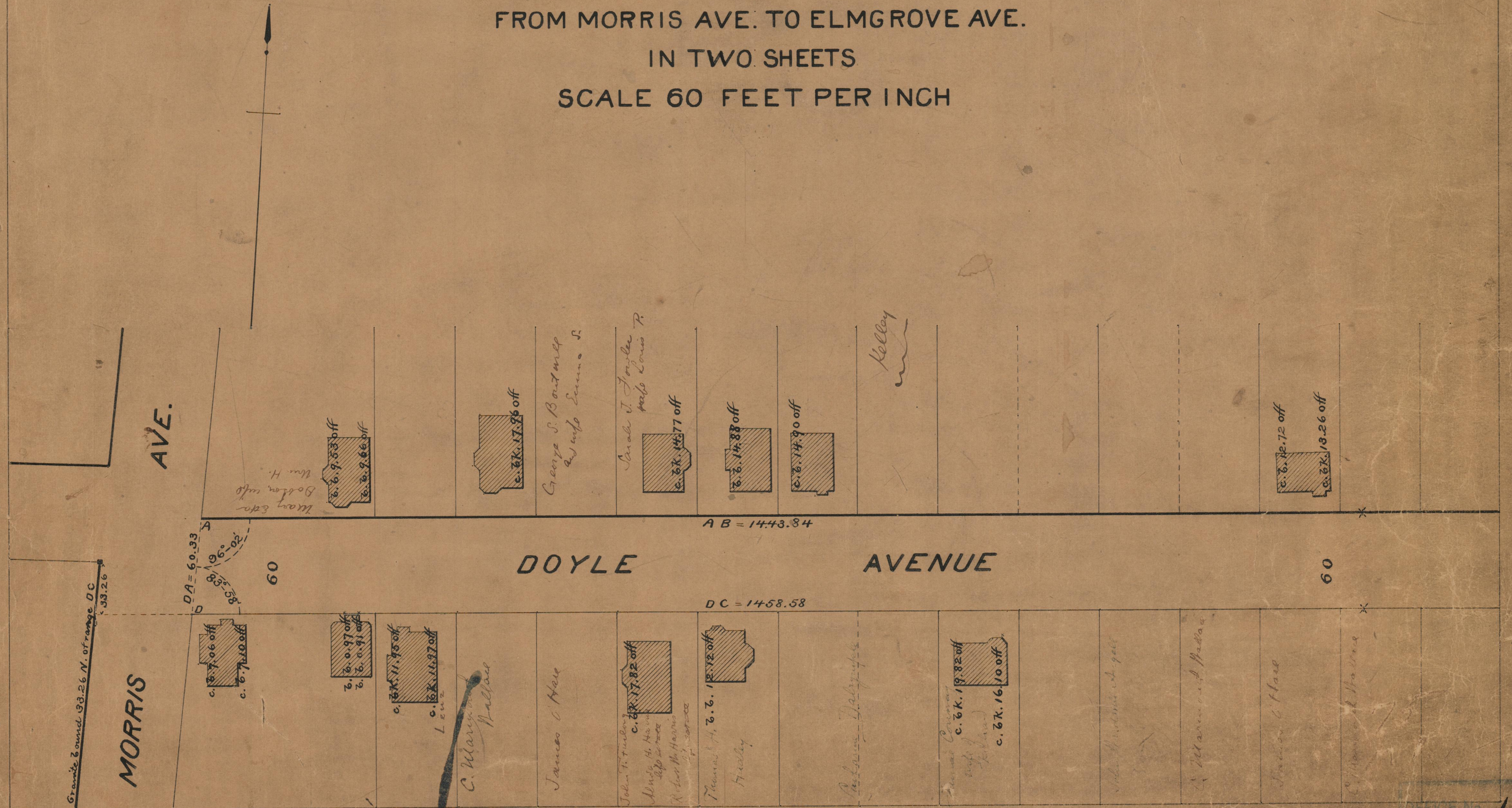
PROVIDENCE CITY ENGINEERS OFFICE
STREET LINE DEPT.
Nov. 27, 1896.
025977

PLAT OF DOYLE AVENUE

FROM MORRIS AVE. TO ELMGROVE AVE.

IN TWO SHEETS

SCALE 60 FEET PER INCH



75
A1

OFFICE No. 13215

NOV 27 1896

75/A