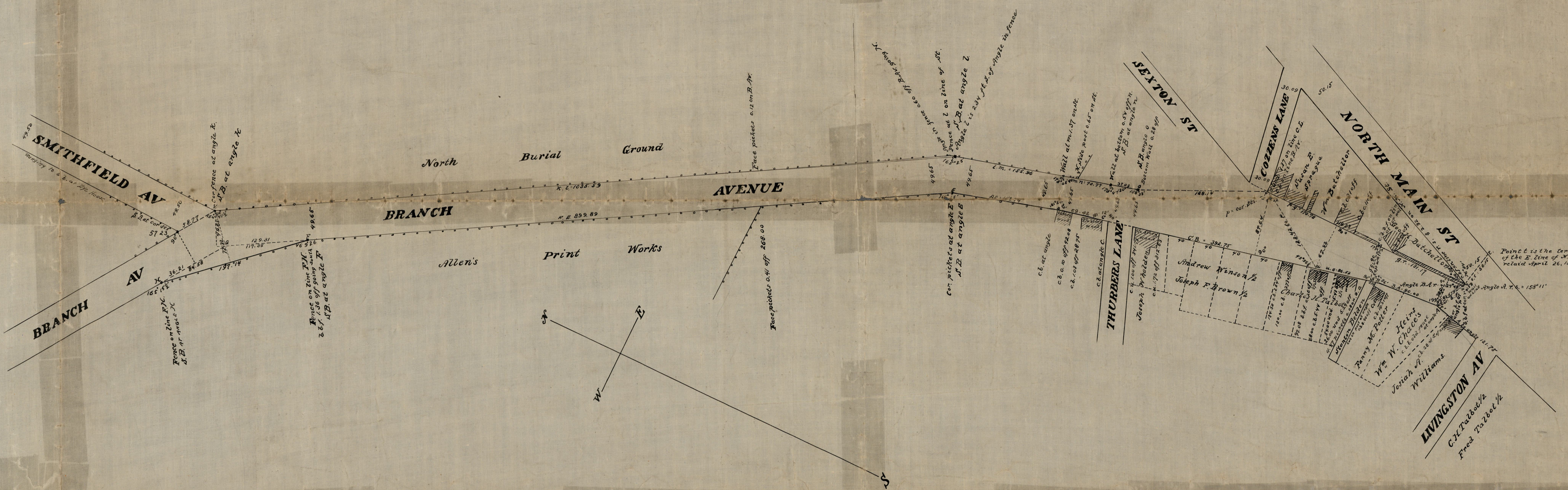


197  
026398  
044803



This Map accompanies our report of Oct 18, 1875  
*Charles Anthony*  
*Sam<sup>l</sup> L. Blaisdell*  
*Charles E. Paine*  
 Commissioners

MAP OF  
**BRANCH AV.**  
 FROM NORTH MAIN ST TO DOUGLASS AVENUE  
 Made by order of  
*Charles Anthony, Samuel L. Blaisdell and Charles E. Paine*  
 Commissioners  
 appointed by the Hon Board of Aldermen  
 Oct 7, 1875.

Surveyed and platted Oct. 1875  
 By C.E. Paine City Engineer.

THREE SHEETS  
 Sheet 1.  
 Scale 80 feet per inch

Compared Nelson & Paine