

PLAT OF

WHITEHALL STREET

AS PLATTED, FROM THE SOUTH LINE OF WALLACE ST.
TO MAGNOLIA ST.
IN TWO SHEETS

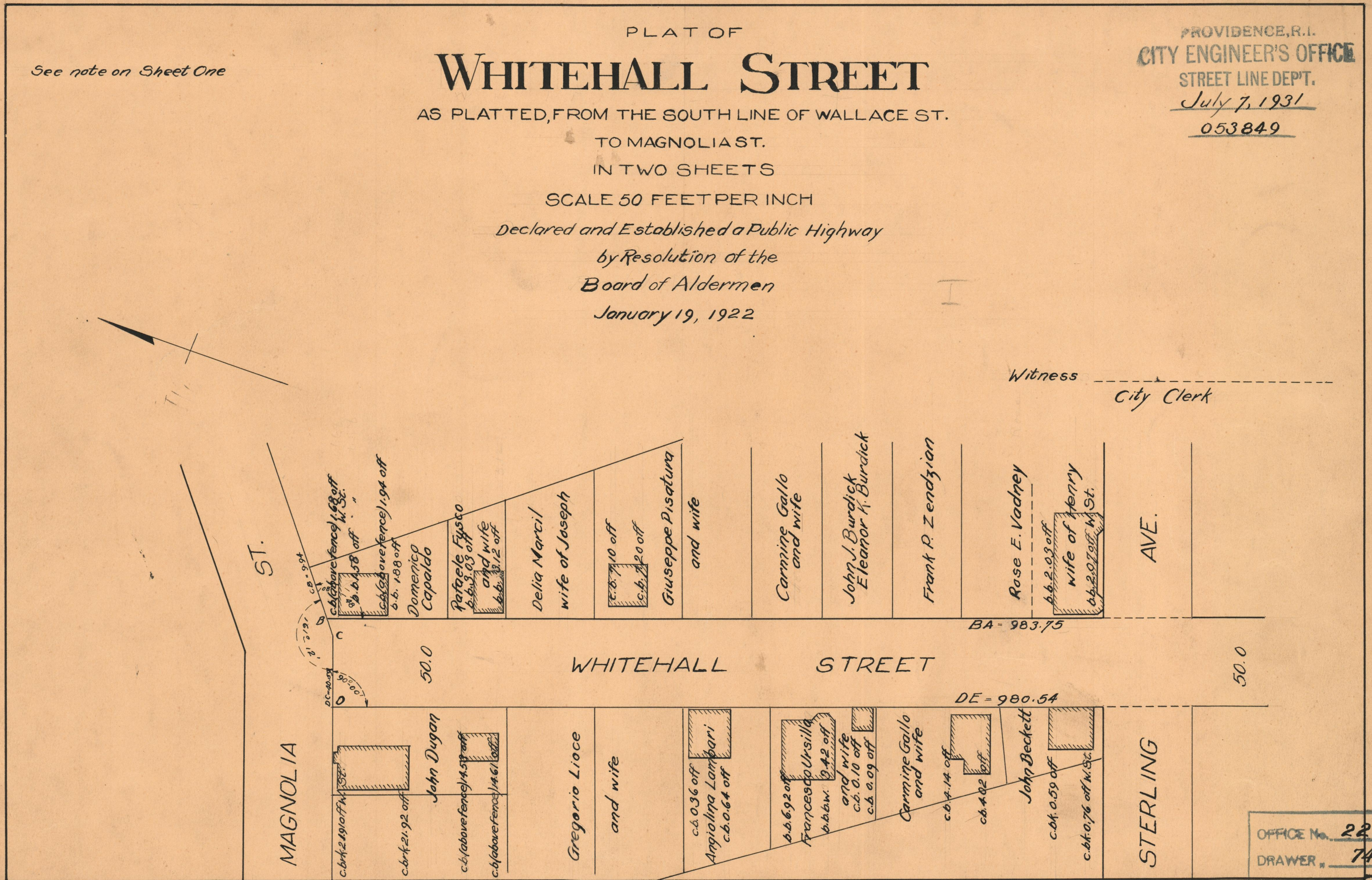
SCALE 50 FEET PER INCH

*Declared and Established a Public Highway
by Resolution of the
Board of Aldermen
January 19, 1922*

PROVIDENCE, R.I.
CITY ENGINEER'S OFFICE
STREET LINE DEPT.
July 7, 1931
053849

See note on Sheet One

Witness _____
City Clerk



OFFICE No.	22261
DRAWER	74
SHEET	B-100