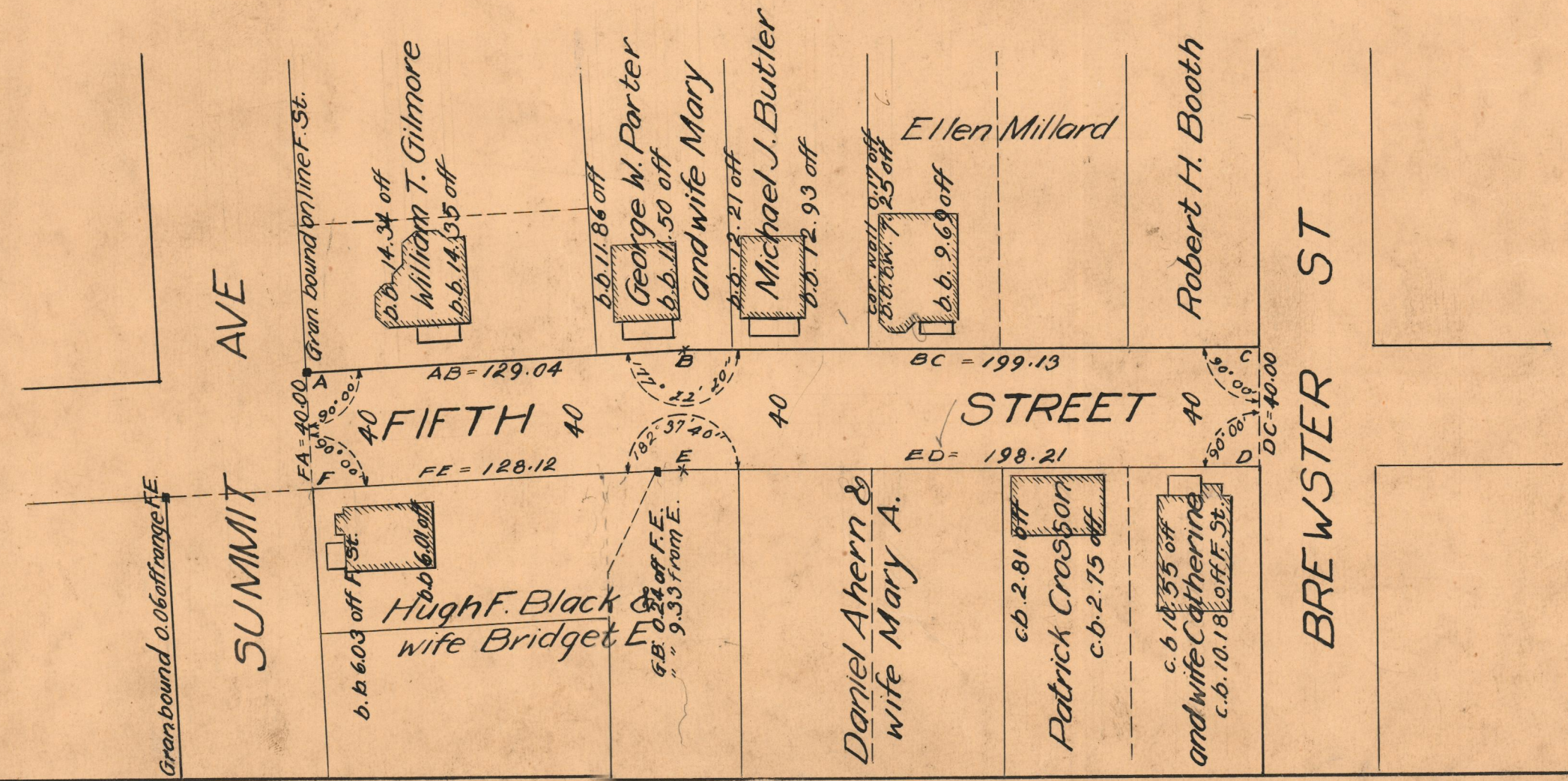
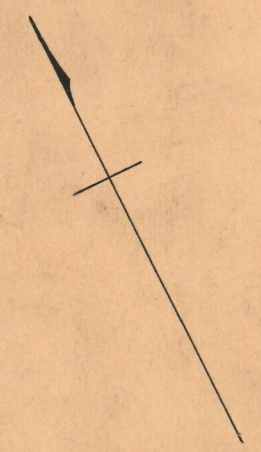


PROVIDENCE, R.I.  
 CITY ENGINEER'S OFFICE  
 STREET LINE DEPT.  
 May 21, 1931  
 053730

NOTE,  
 The area declared and established as a public highway is indicated by the letters ABCDEF.  
 The lines thus fixed agree with the deeds recorded in Deed Book 450 page 52, Deed Book 452, page 425, Deed Book 543, page 269, Deed Book 553, page 432, Deed Book 558, page 479, and Deed Book 561, pages 244, and 248, in the office of the Recorder of Deeds, and also with the plats of land abutting on the area thus declared, copies of which can be found, respectively, on plat cards 525 and 555 in said Recorder's office.

PLAT OF  
**FIFTH STREET**  
 AS PLATTED  
 FROM SUMMIT AVE. TO BREWSTER ST.  
 SCALE 50 FEET PER INCH  
 Declared and Established as a Public Highway  
 by Resolution of the  
 Board of Aldermen  
 January 19, 1922

Witness \_\_\_\_\_  
 City Clerk



OFFICE No. 22251  
 DRAWER 74  
 SHEET B 98