

PROVIDENCE, R.I.
 CITY ENGINEER'S OFFICE
 STREET LINE DEPT.
 March 6, 1931
 053488

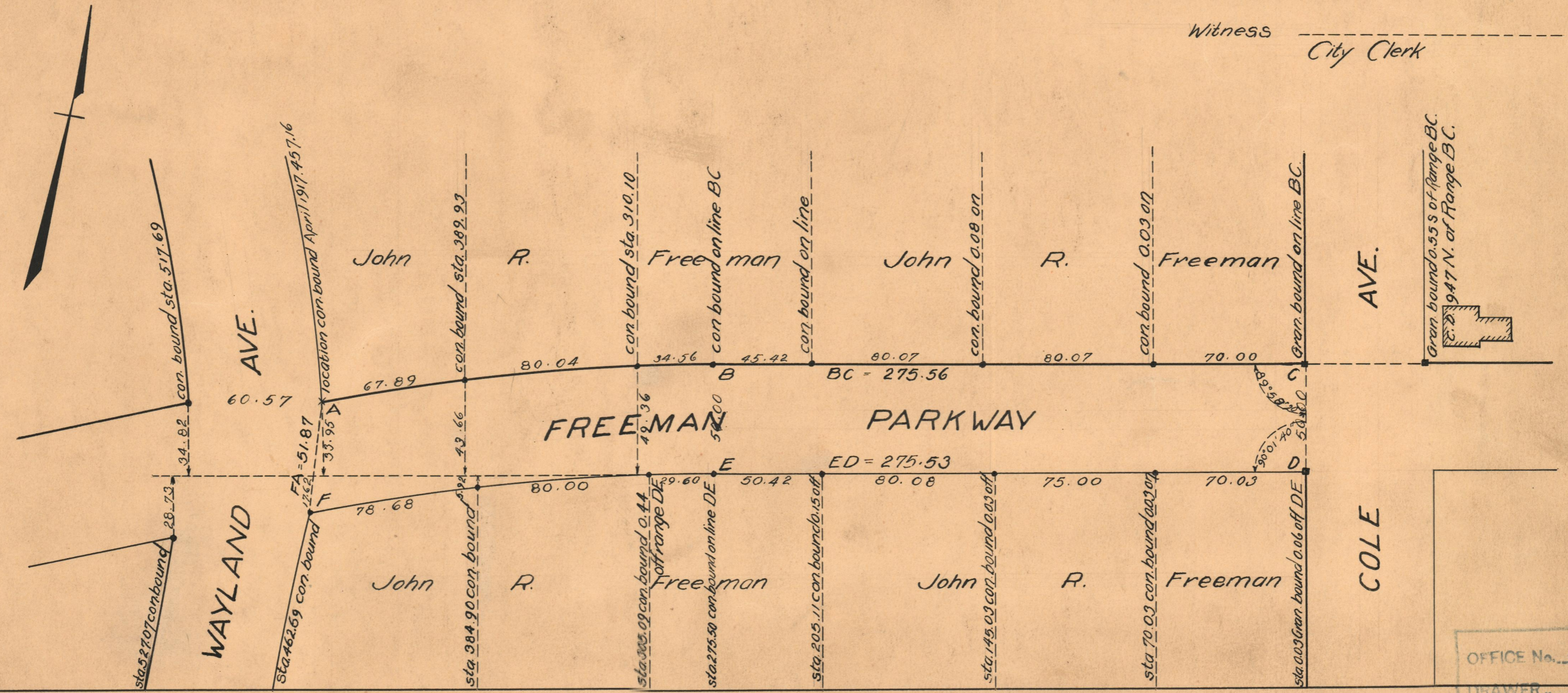
PLAT OF
FREEMAN PARKWAY

FROM WAYLAND AVE. TO COLE AVE.
 SCALE 50 FEET PER INCH

Declared a Public Highway
 by Resolution of the
 Board of Aldermen
 December 15, 1921

NOTE,
 The area opened and declared a public highway is approximately indicated by the letters ABCDEF.
 By the terms of "Plat No. 1 of land in Providence belonging to John R. Freeman" (a copy of which can be found on Plat card #1036 in the Recorder's office.) the limits of this portion of Freeman Parkway are fixed by the concrete bounds at the lot corners.
 The position of these bounds and their location in relation to each other is noted by stations on, and ordinates measured at right angles to, the base line DE and its extension westward.

Witness _____
 City Clerk



OFFICE No. 22249
 DRAWER " 74
 SHEET " B-96