

February 20, 1931
 053456

PLAT OF
ROSE COURT

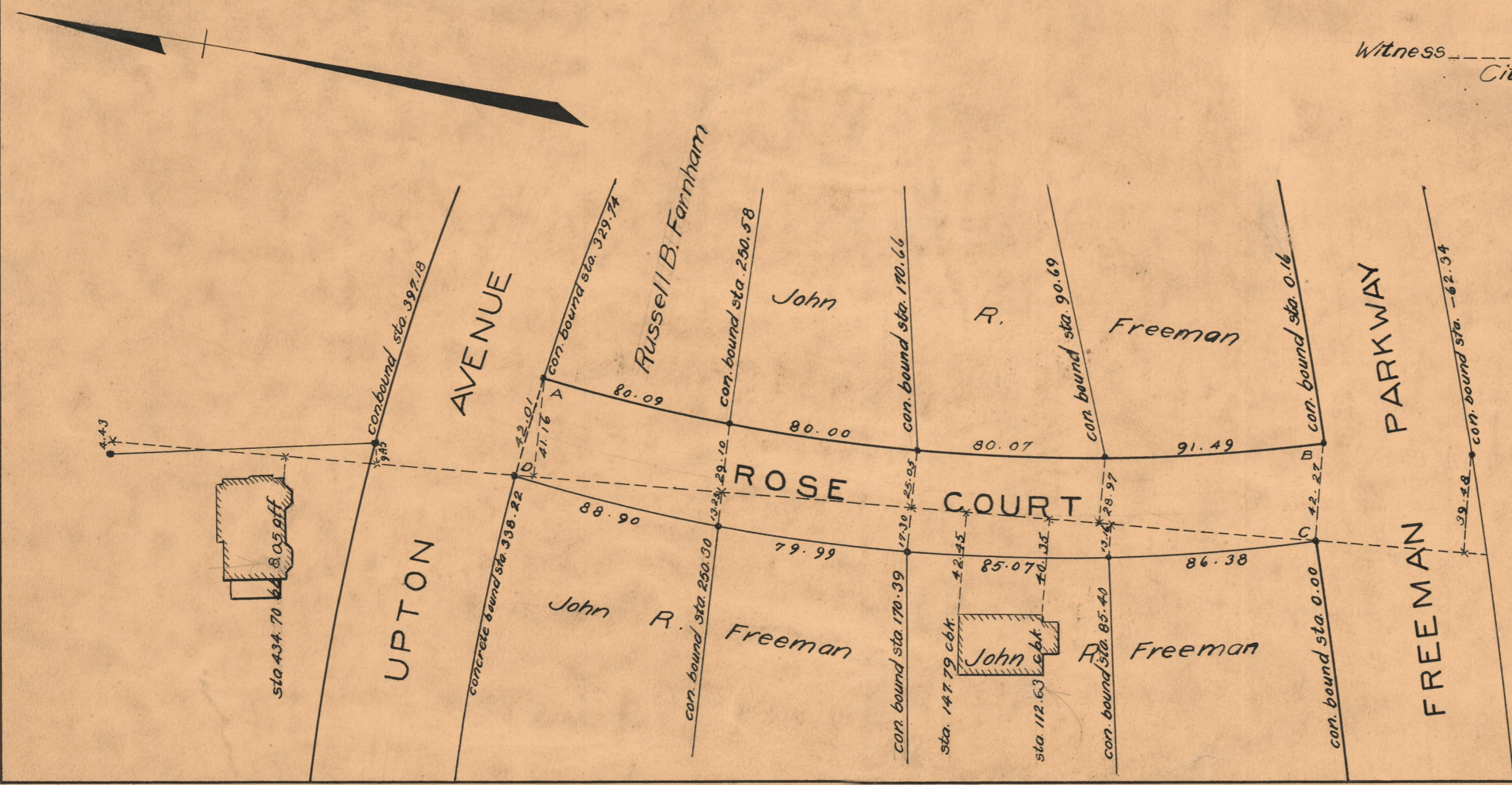
FROM FREEMAN PARKWAY TO UPTON AVE.

SCALE 50 FEET PER INCH

Declared a Public Highway
 by Resolution of the
 Board of Aldermen
 December 15, 1921

NOTE,
 The area opened and declared a public highway is indicated by the location of the concrete bounds hereon shown, as specified on "Plat No. 1 of land in Providence belonging to John R. Freeman," (a copy of which can be found in the Recorder's office on card #1036)
 The position of these bounds and their location in relation to each other is noted by stations on and ordinates measured at right angles to the base line DC and its extensions.

Witness _____
 City Clerk



OFFICE No. 22248
 DRAWER " 74
 SHEET " B 95