

See note on Sheet One.

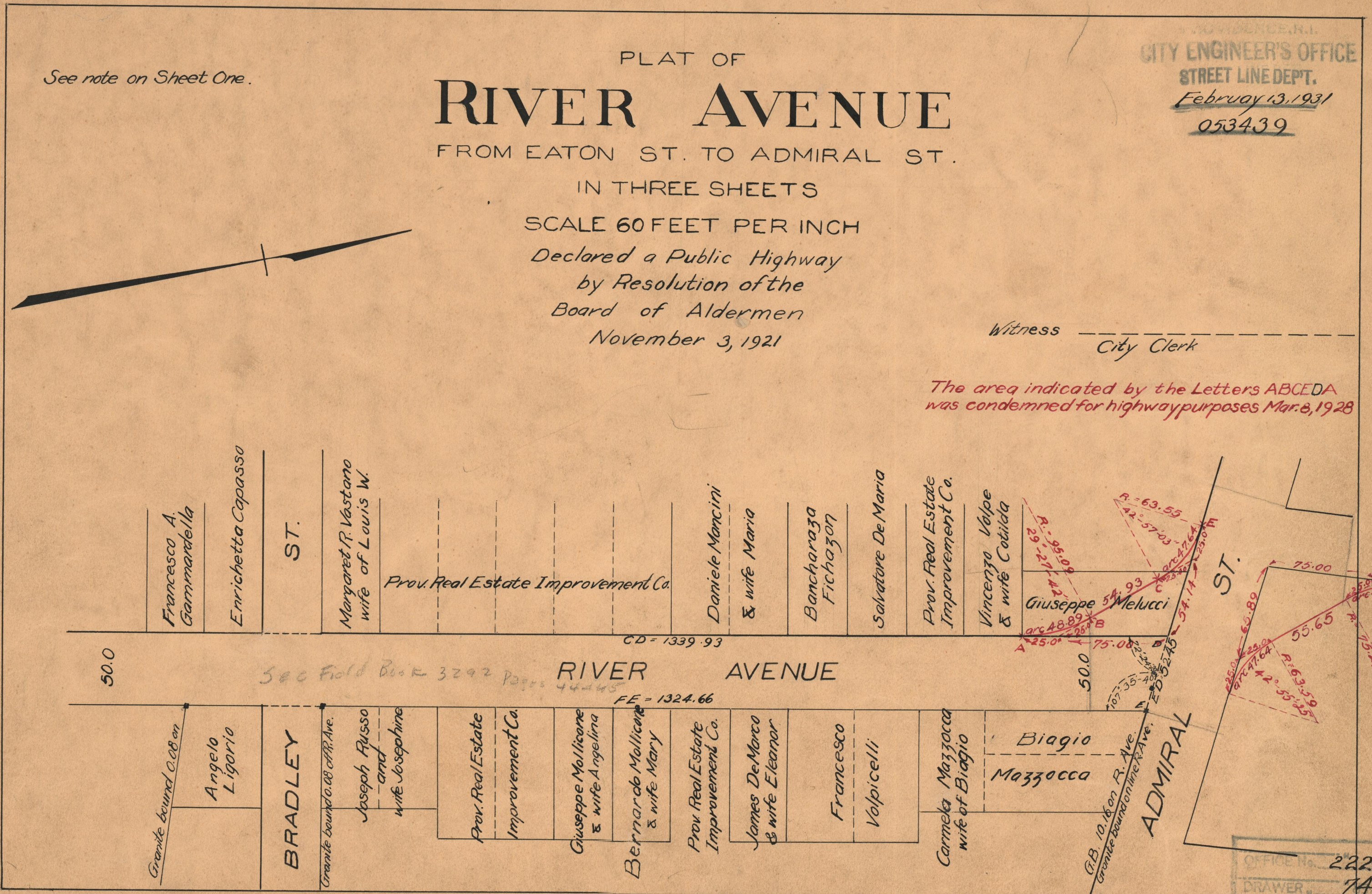
PLAT OF
RIVER AVENUE
FROM EATON ST. TO ADMIRAL ST.

CITY ENGINEER'S OFFICE
STREET LINE DEPT.
February 13, 1931
053439

IN THREE SHEETS
SCALE 60 FEET PER INCH
Declared a Public Highway
by Resolution of the
Board of Aldermen
November 3, 1921

Witness _____
City Clerk

The area indicated by the Letters ABCEDA
was condemned for highway purposes Mar. 8, 1928



OFFICE No. 22247
DRAWER 7A
SHEET B 9A