

PROVIDENCE, R.I.
CITY ENGINEER'S OFFICE
STREET LINE DEPT.

February 4, 1931

053365

Note

The area declared a public highway is indicated by the letters A, B, C, D, E, F, G, H, I, and J.
The lines thus fixed agree with the deeds recorded in Deed Book 472 page 307 Deed Book 473 page 331 Deed Book 477 page 19 Deed Book 538 pages 230 335 and 337 and Deed Book 543 pages 12 and 27 in the office of the Recorder of Deeds.

PLAT OF

RIVER AVENUE

FROM EATON ST. TO ADMIRAL ST.

IN THREE SHEETS

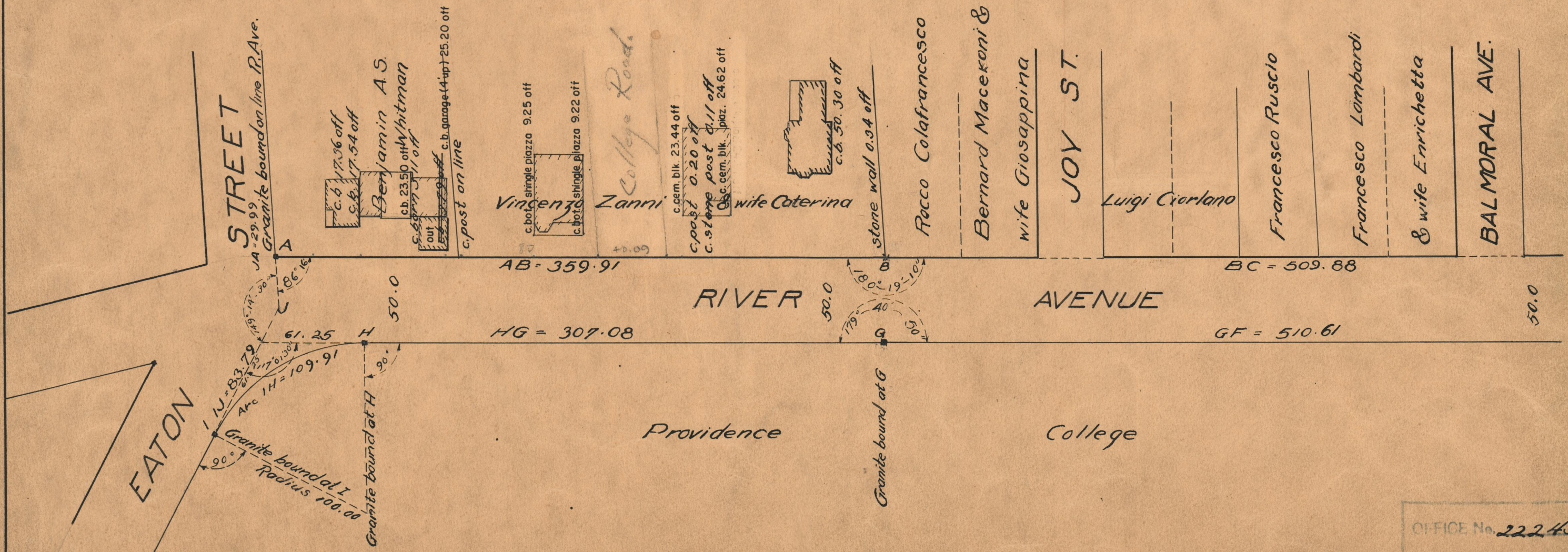
SCALE 60 FEET PER INCH

Declared a Public Highway
by resolution of the
Board of Aldermen

November 3, 1921

Witness

City Clerk



OFFICE No.	22245
DRAWER	74
SHEET	B 92