

PROVIDENCE, R.I.
CITY ENGINEER'S OFFICE
STREET LINE DEPT.

053339

Jan 20, 1931

PLAT OF
THE EXTENSION OF

FAIRVIEW STREET

FROM LEAH ST. TO GRAY ST.
AND FROM GRAY ST. TO PARNELL ST.

PARNELL STREET

to connect with
CLOUD AND LUCY STS.

SCALE 50 FEET PER INCH

Showing land taken for highway purposes
by Joint Resolution No. 705

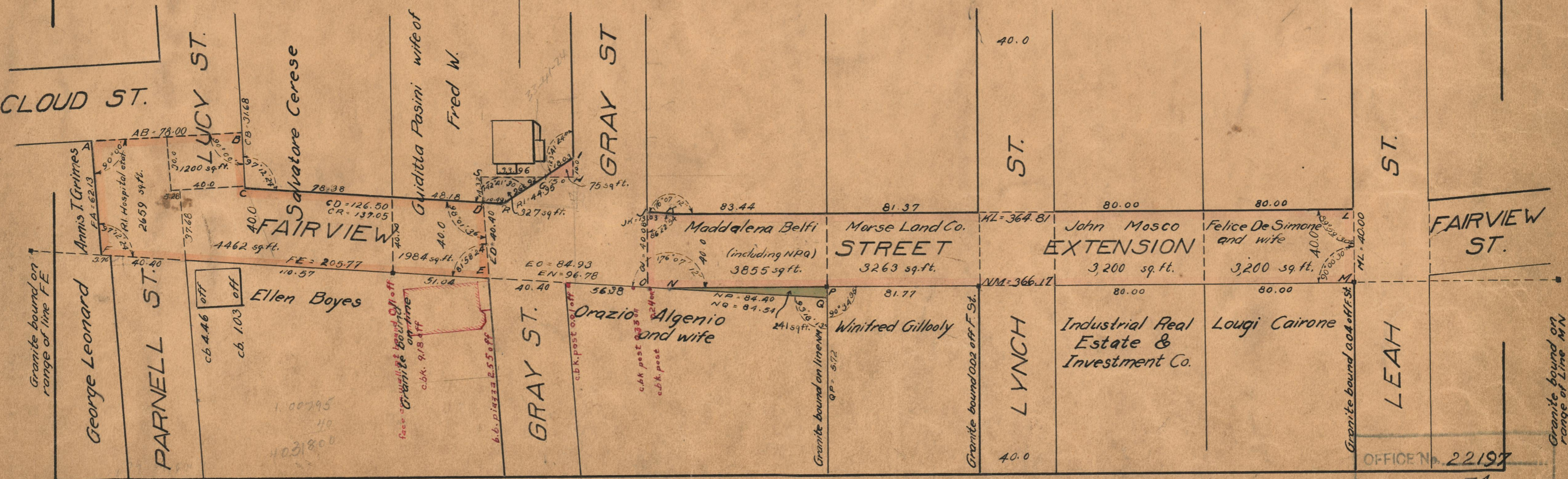
of the
City Council
approved Oct. 10, 1921

Witness _____
City Clerk

NOTE,
The ^{areas of} land taken for highway purposes
and described as Parcels 1, 2 & 3, are
respectively indicated by the letters
ABCDEFGHI and JKLMNO. The lines
thus fixed agree with the description
thereof in the Joint Resolution of the City
Council No 705, approved Oct 10, 1921.

The triangle defined by the letters NPQ
indicates the position of Parcel No 4, as
similarly described in said Resolution,
as land taken in excess of that required
for highway purposes.

The area indicated by the letters SGRD
being formerly a portion of Gray Street,
was declared useless and abandoned as a
public highway by a Resolution of the
Board of Aldermen dated Nov. 17, 1921



OFFICE No. 22197
DRAWER " 74
SHEET " B 91