

81-24

CITY ENGINEER'S OFFICE
STREET LINE DEPT.

Jan. 14, 1931

053310

Note; The area declared a public highway
is indicated by the letters ABCD.
The lines thus fixed agree with the
deeds recorded in Deed book 610, pages
410, 411 and 414, in the office of the
Recorder of Deeds.

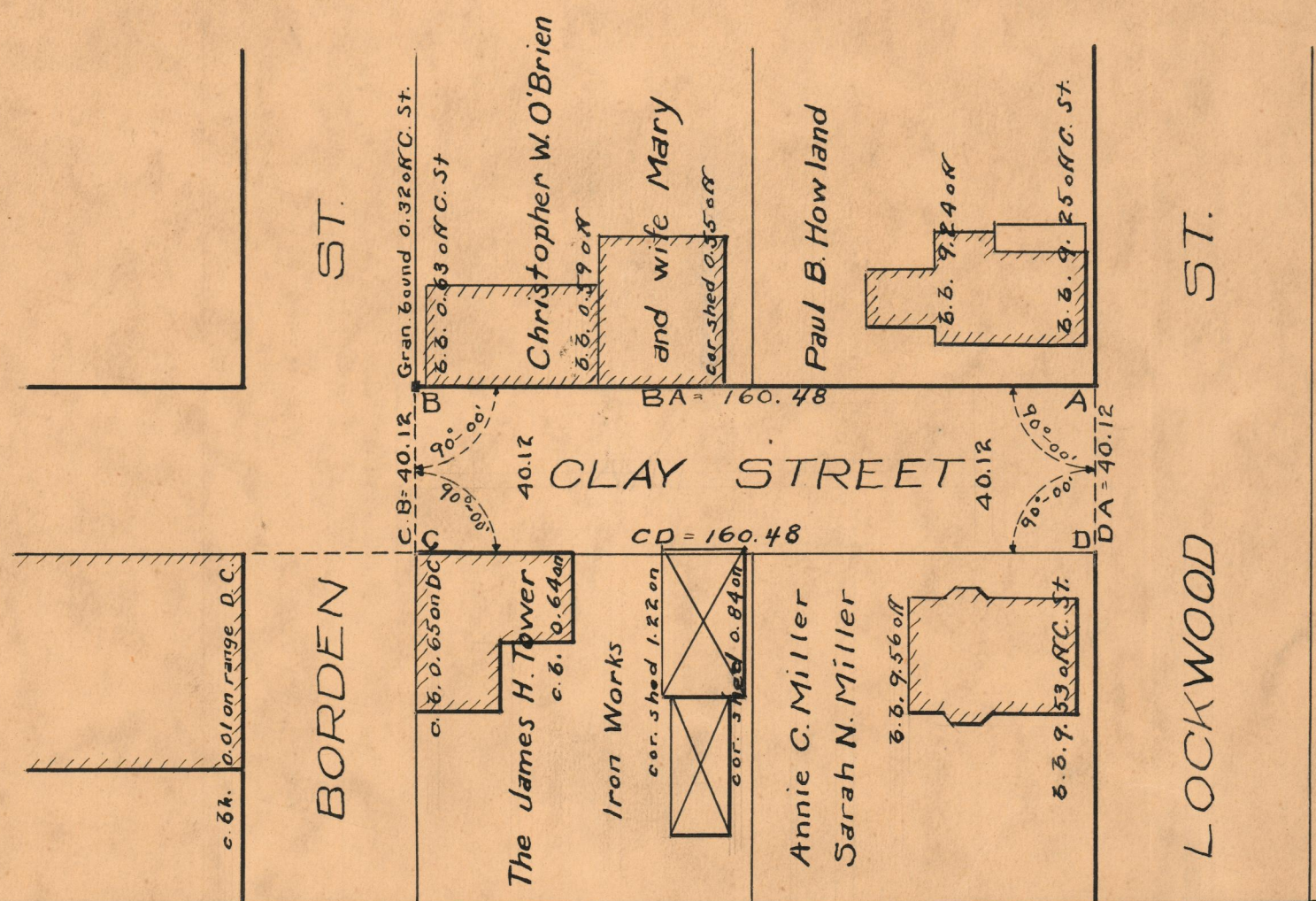
PLAT OF CLAY STREET

FROM LOCKWOOD ST. TO BORDEN ST
SCALE 40 FEET PER INCH

Declared a Public Highway
by Resolution of the
Board of Aldermen
November 3, 1921.



Witness, -----
City Clerk.



74
B-89

OFFICE No. 22195
DRAWER 74
SHEET B-89