

See Note on Sheet One.

PLAT OF PINEHURST AVENUE

AS PLATTED
FROM SMITH ST. TO EATON ST.
IN TWO SHEETS
SCALE 60 FEET PER INCH

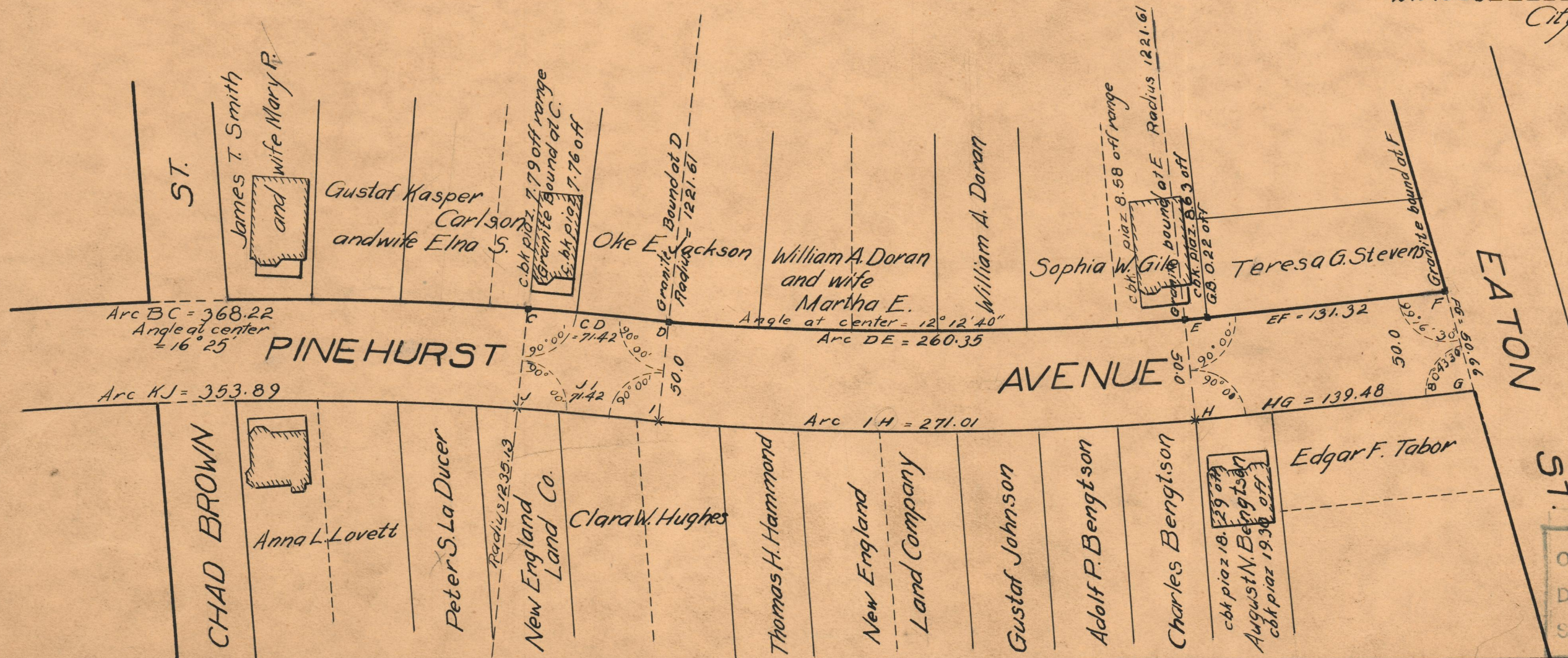
Declared and Established as a Public Highway
by Resolution of the
Board of Aldermen
August 4, 1921

PROVIDENCE, R.I.
CITY ENGINEER'S OFFICE
STREET LINE DEPT.

053336

Jan 17, 1931

Witness _____
City Clerk



OFFICE No.	22183
DRAWN	74
SHEET	B-88