

SHEET ONE

Note,

The area declared and established as a public highway is indicated by the letters ABCDEFGHN

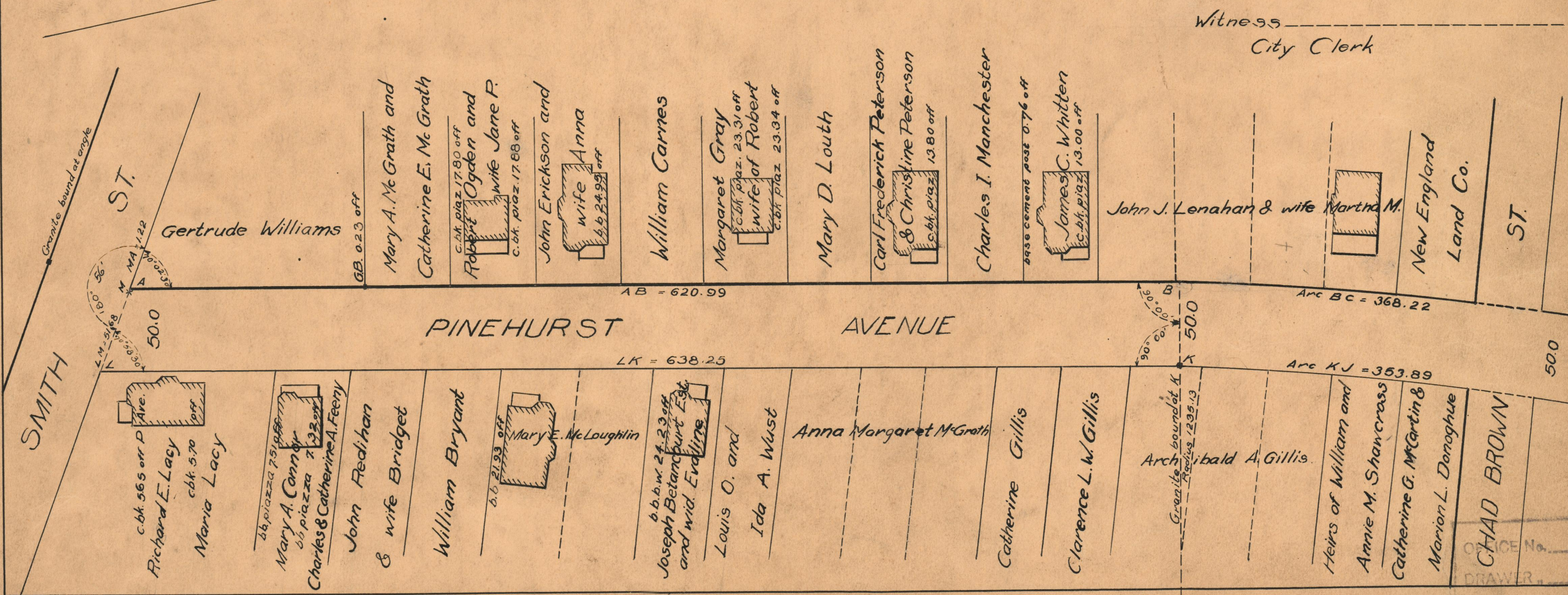
The lines thus fixed agree with the deeds recorded in deed book 589, page 82, Deed book 601 page 369, and Deed book 607 pages 224, 236, 244, 330, 342, 344, 345, 346, 347, 368, 369, 370, 385, 386, 392, 393, 408, 418, 420, 454, and 543, in the office of the Recorder of Deeds, and also with the plat entitled "Oakland Villa, surveyed & platted June, 1906 by Raymond W. Seamans Eng. a copy of which is to be found on plat card 928, in said office.

PLAT OF
PINEHURST AVENUE

AS PLATTED
FROM SMITH ST. TO EATON ST.
IN TWO SHEETS
SCALE 60 FEET PER INCH

Declared and established as a Public Highway
by Resolution of the
Board of Aldermen
August 4, 1921

PROVIDENCE R.I.
CITY ENGINEER'S OFFICE
STREET LINE DEPT.
January 12, 1931
053307



Witness
City Clerk

OFFICE No. 22182
DRAWN 74
SHEET B-87