

CITY ENGINEER'S OFFICE
STREET LINE DEPT.

Dec. 10, 1930

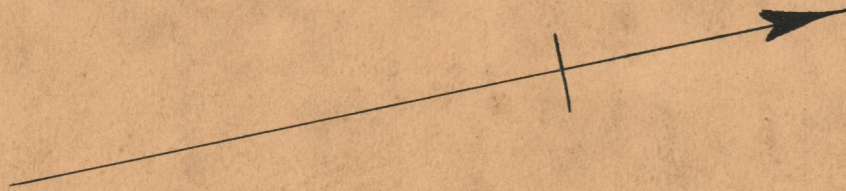
053237

NOTE,

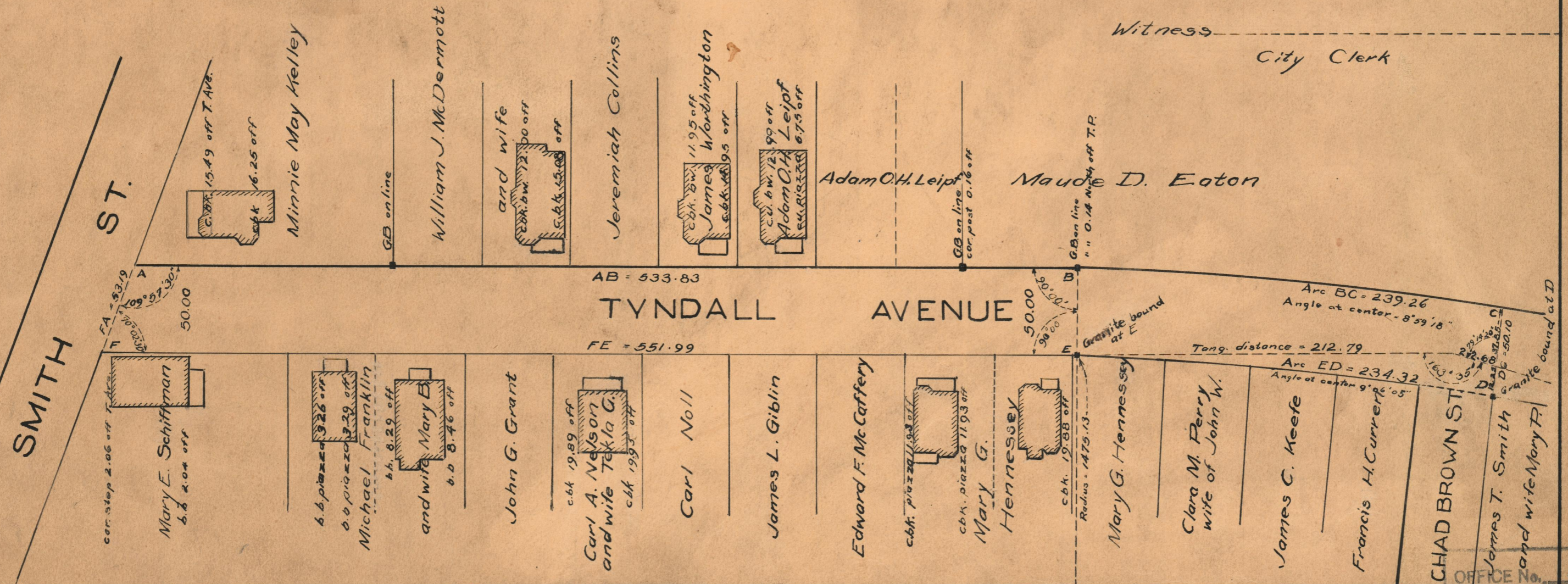
The area declared and established as a public highway is indicated by the letters ABCDEF. The lines thus fixed agree with the deeds recorded in Deed book 561, pages 175, 178, 179, 193, 209, 219, 255, and 431, Deed book 583, page 302, and Deed book 607, pages 427, 428, 429, 430 and 431, in the office of the Recorder of Deeds also with plat entitled "Oakland Villa," Surveyed and Platted June, 1906 by Roymon W. Seamans, Eng., a copy of which can be found on plot card 928, in said office.

PLAT OF
TYNDALL AVENUE
AS PLATTED
FROM SMITH ST. TO THE
NORTH LINE OF CHAD BROWN ST.
SCALE 60 PER INCH

Declared and established as a Public Highway
by Resolution of the
Board of Alderman
August 4, 1921



Witness _____
City Clerk



OFFICE No. 22151
DRAWER " 74
SHEET " B - 86