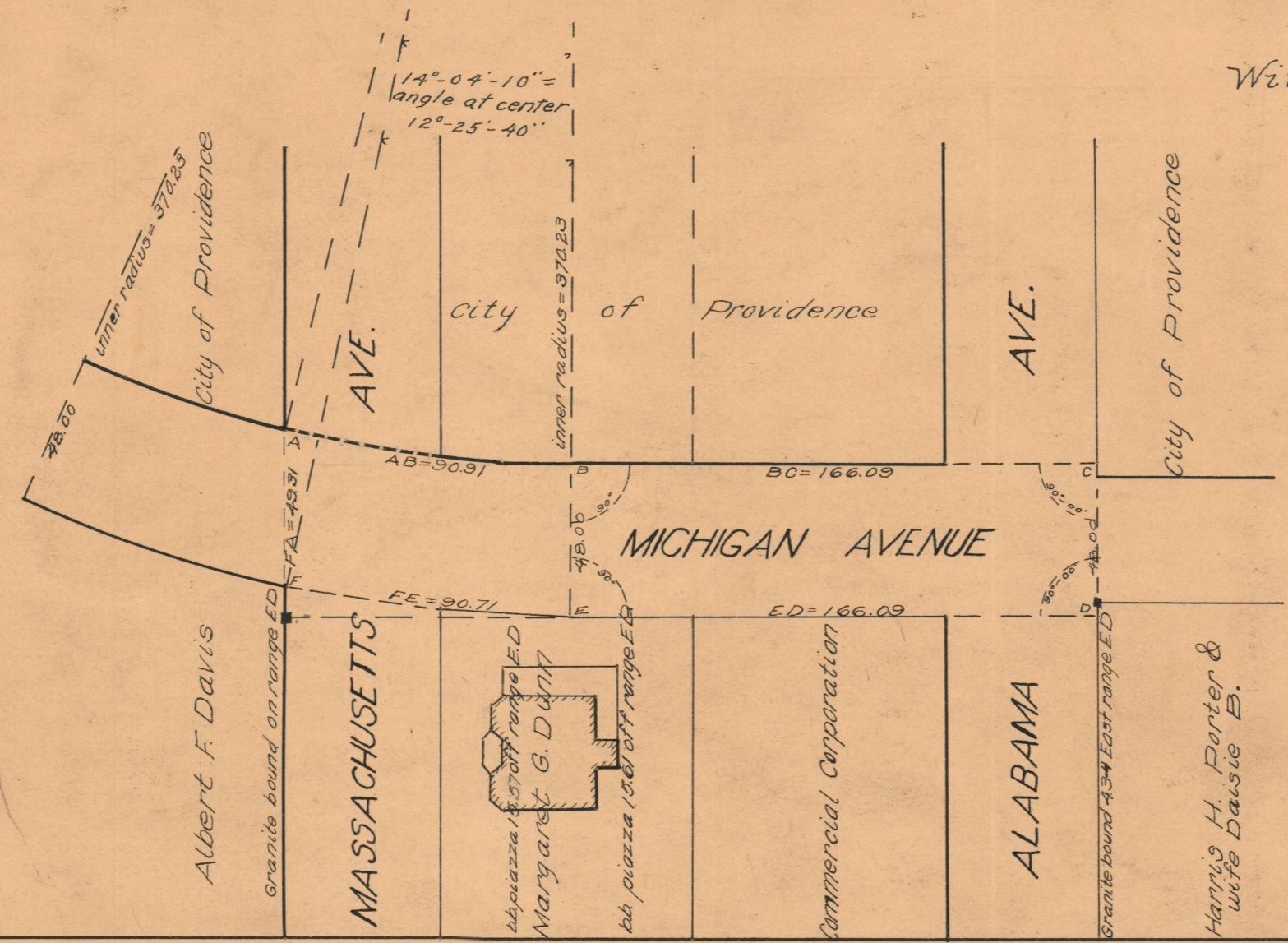
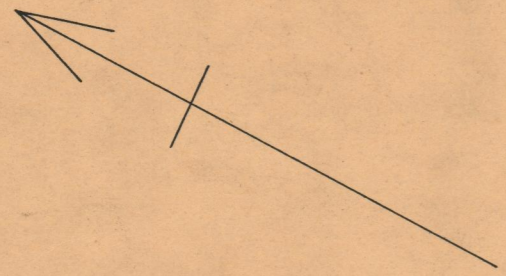


PROVIDENCE R.I.
 CITY ENGINEERS OFFICE
 STREET LINE DEPT.
 July 16, 1934
 056005

PLAT OF
MICHIGAN AVENUE
 FROM SOUTHERLY LINE OF ALABAMA AVE.
 TO NORTHERLY LINE OF MASSACHUSETTS AVE.
 SCALE 50 FT. PER INCH

Declared a public highway
 by resolution of the
 Board of Aldermen
 August 4, 1921.

Note: The area declared a public highway
 is indicated by the letters ABCDEF.
 The lines thus defined agree with
 the deeds recorded in Deed Book 433,
 page 445, and Deed Book 610, pages 224
 and 234, in the office of the Recorder of
 Deeds.



OFFICE No. 22142
 DRAWER 74
 SHEET B-84