

Copy of 045182

PROVIDENCE, R.I.  
CITY ENGINEER'S OFFICE

STREET LINE DEPT.

Nov. 29, 1930.

053214

PLAT OF

# ALABAMA AVENUE

FROM MARYLAND AVE. TO MICHIGAN AVE.

SCALE 60 FEET PER INCH

DECLARED A PUBLIC HIGHWAY

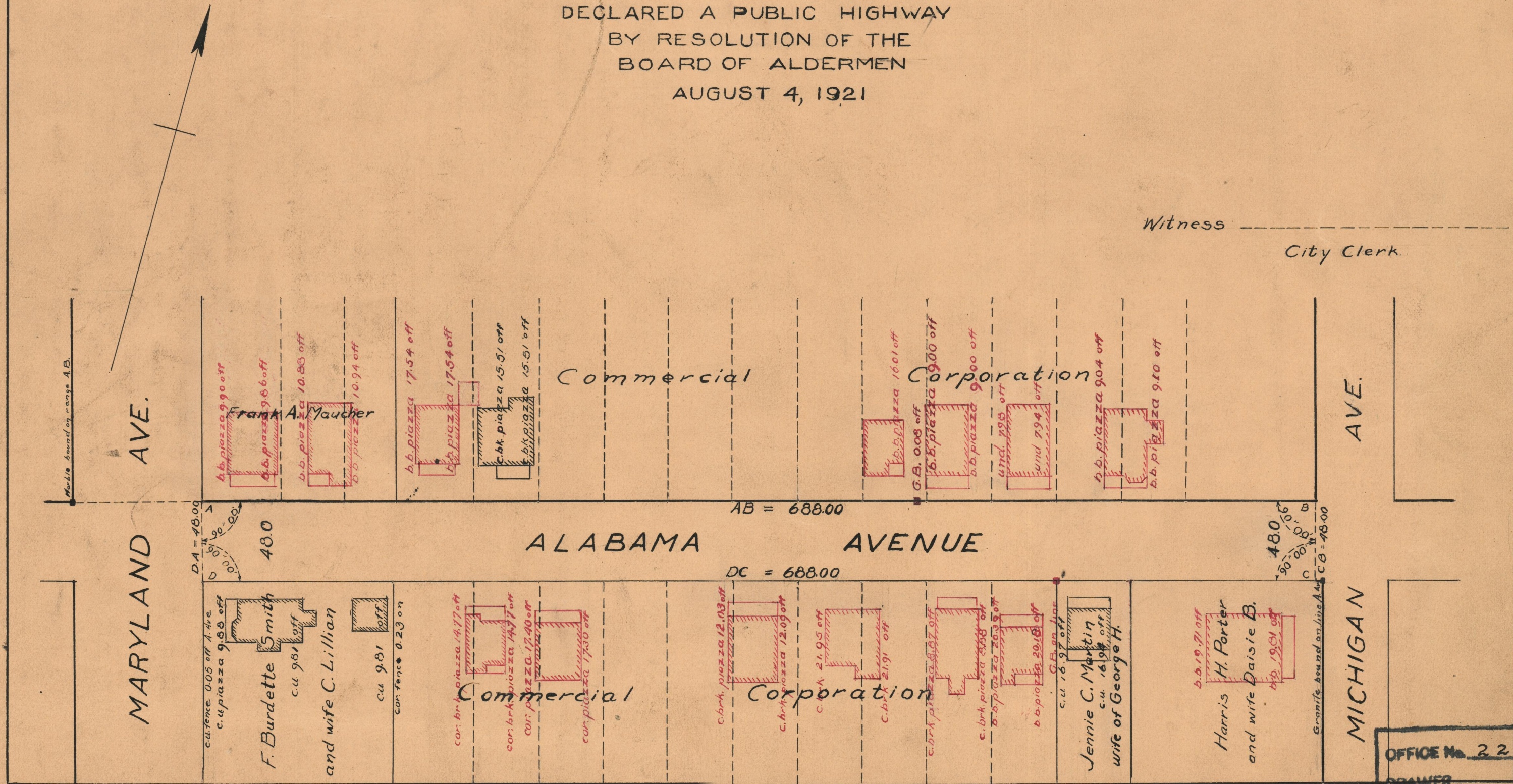
BY RESOLUTION OF THE  
BOARD OF ALDERMEN

AUGUST 4, 1921

NOTE;  
The area declared a public highway  
is indicated by the letters A,B,C,D.  
The lines thus fixed agree with the deeds  
recorded in Deed Book 546, page 462,  
and Deed Book 610, page 224, in the office  
of the Recorder of Deeds.

Witness \_\_\_\_\_

City Clerk.



OFFICE No.	22141
DRAWER	74
SHEET	B-83