

PLAT OF

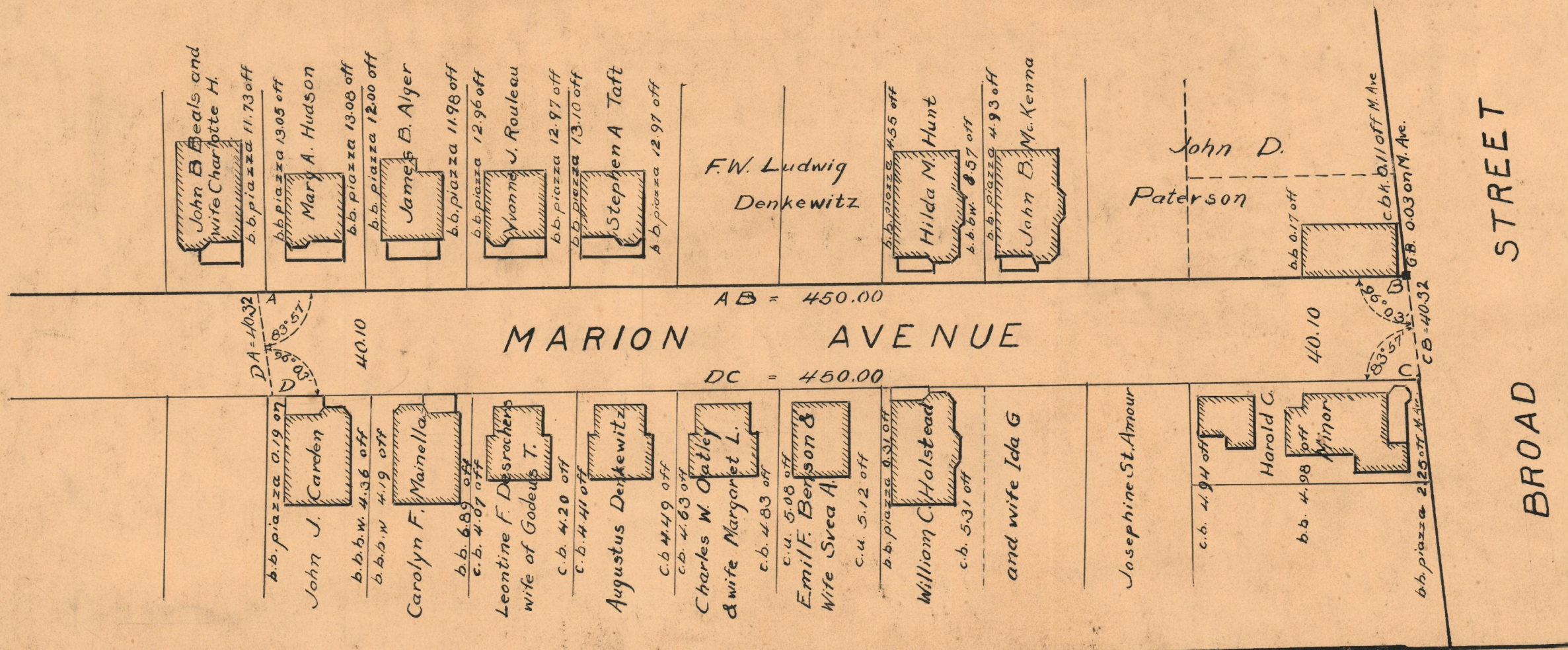
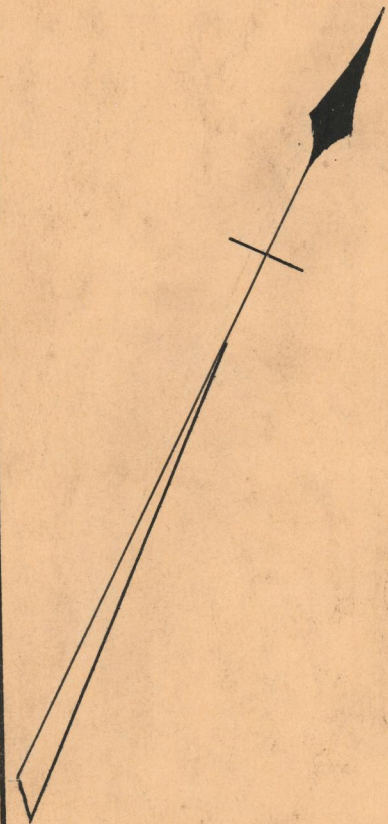
MARION AVENUE

FROM BROAD ST. TO
 A POINT 450 FEET WESTERLY
 SCALE 50 FEET PER INCH

DECLARED A PUBLIC HIGHWAY
 BY RESOLUTION OF THE
 BOARD OF ALDERMEN
 JUNE 2, 1921

Witness _____
 City Clerk

NOTE,
 The area declared a public highway is indicated by the letters A, B, C, D
 The lines thus fixed agree with the deeds recorded in Deed Book 410, page 42, Deed Book 415, page 148, Deed Book 561, pages 195, 247, 270, 442, and 480, Deed Book 565, pages 142, and 143, and Deed Book 607, pages 208, 209, 220, 221, 222, 228, 258, 259 and 260, in the office of the Recorder of Deeds



OFFICE No. 9917
 DRAWER, 74
 SHEET B-82