

PROVIDENCE, R.I.
CITY ENGINEER'S OFFICE
STREET LINE DEPT.
May 2, 1930.
052711

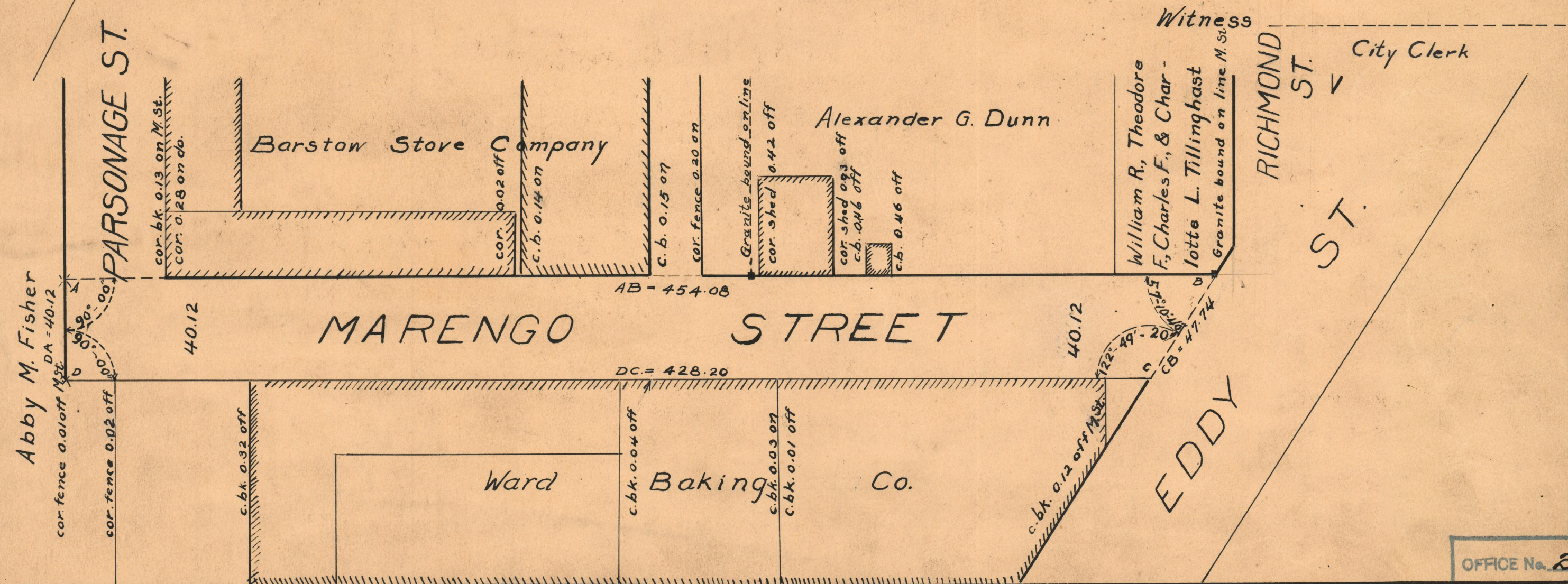
NOTE
The area established as a public highway is indicated by the letters ABCD
The lines thus defined agree with the map entitled "Plan of land belonging to H.C. Mathewson, Surveyed by John Howe, June 1861, & Dec. 1873, Compiled 1878," etc.

A copy of this map can be found on plat card #429 in the office of the Recorder of Deeds.

PLAT OF MARENGO STREET

AS PLATTED
FROM EDDY ST. TO WEST SIDE PARSONAGE ST.
SCALE 40 FEET PER INCH

ESTABLISHED AS A PUBLIC HIGHWAY
BY RESOLUTION OF THE
BOARD OF ALDERMEN
AUGUST 4, 1921



OFFICE No. 22135
DRAWER 74
SHEET B-81