

NOTE,

The area opened and declared a public highway is indicated by the letters ABCDEF.

The lines thus fixed are intended to agree with "Plat No. 1 of Land in Providence Belonging to John R. Freeman," on which Freeman Parkway was originally platted. See plat card #1036 in the office of the Recorder of Deeds.

By the terms of this plat the lines of the streets thereon are fixed by concrete bounds.

The positions of these bounds and their location with reference to each other is noted hereon by stations on, and ordinates measured at right angles to the base line XY.

PLAT OF

# FREEMAN PARKWAY

BETWEEN ELMGROVE AVE. AND WAYLAND AVE.

SCALE 50 FEET PER INCH

OPENED AND DECLARED A PUBLIC HIGHWAY  
BY RESOLUTION OF THE BOARD OF ALDERMEN

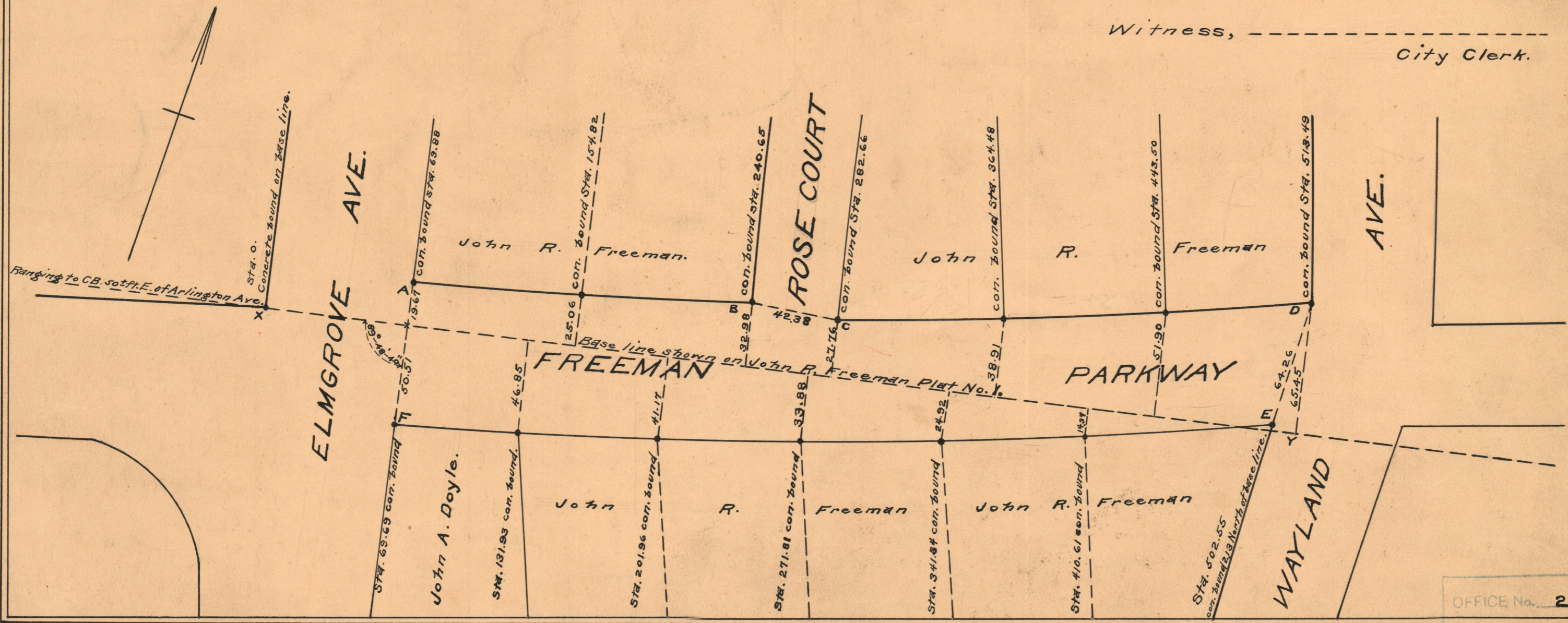
MAY 12, 1921.

PROVIDENCE, R.I.  
CITY ENGINEER'S OFFICE  
STREET LINE DEPT.

March 3, 1930.

052551

Witness, \_\_\_\_\_  
City Clerk.



OFFICE No.	22132
DRAWER	74
SHEET	B-80