

NOTE,

The area opened and declared a public highway is determined by the location of the concrete bounds shown hereon.

This agrees with the plat cards #1036 & #1048 in the office of the Recorder of Deeds, on which the street called Barberrry Hill was originally platted and later revised.

The positions of these bounds and their location in reference to each other is noted by stations on, and ordinates measured at right angles to the base lines AB and BC.

PLAT OF BARBERRY HILL

BETWEEN ARLINGTON AVE. AND FREEMAN PARKWAY.

SCALE 50 FEET PER INCH

OPENED AND DECLARED A PUBLIC HIGHWAY.
BY RESOLUTION OF THE BOARD OF ALDERMEN
MAY 12, 1921.

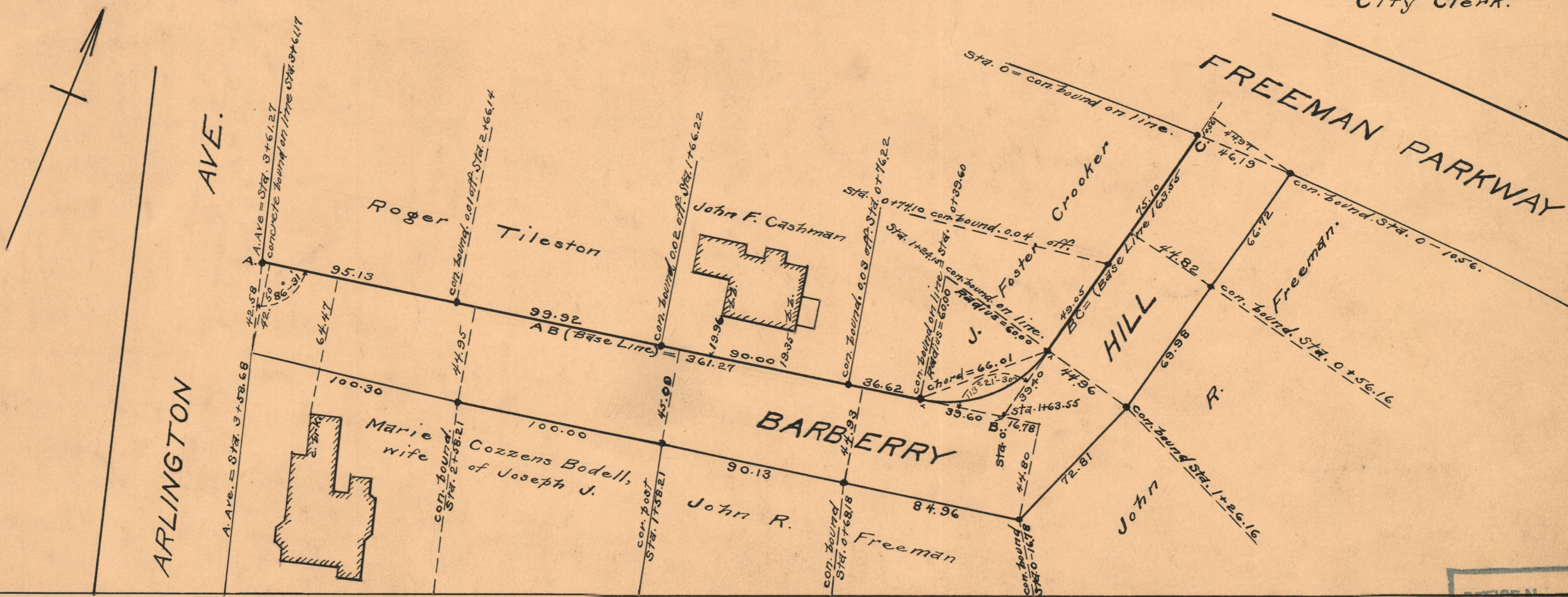
PROVIDENCE, R.I.
CITY ENGINEER'S OFFICE
STREET LINE DEPT.

February 18, 1930.

052525

Witness

City Clerk.



OFFICE NO.	22131
DRAWER	74
SHEET	B-79