

NOTE.

The area opened and declared a public highway is indicated by the letters ABCDEFGHIA

The lines thus fixed agree with the map entitled "Plat No. 1, of Land in Providence, R.I., belonging to John R. Freeman" &c., a copy of which can be found on plat card #1036, in the office of the Recorder of Deeds.

By the terms of the said map the lines of the streets thereon are determined by concrete bounds and the positions of these bounds and their location in relation to each other is noted and recorded hereon by stations on, and ordinates measured at right angles to the base line XY.

PLAT OF WAYLAND AVENUE

BETWEEN UPTON AVE. AND LAUREL AVE.

SCALE 50 FEET PER INCH.

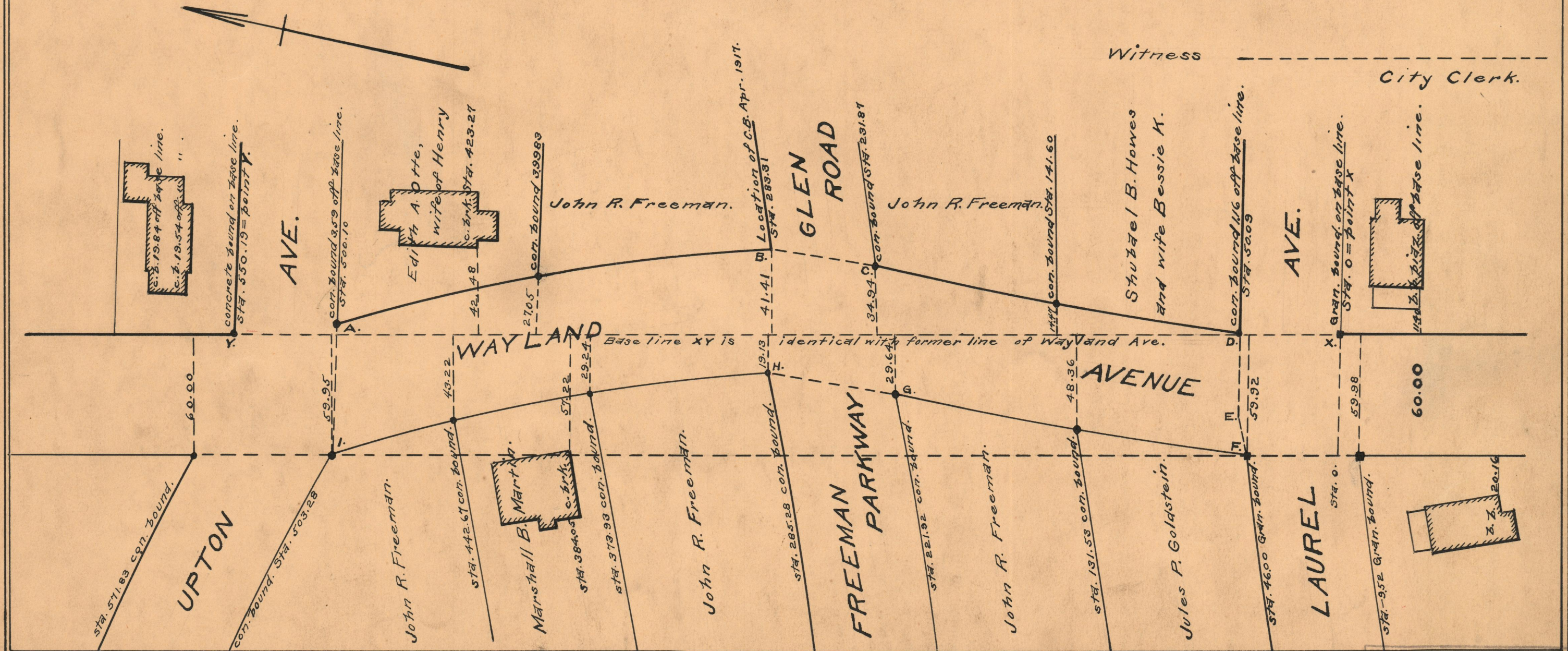
OPENED AND DECLARED A PUBLIC HIGHWAY
BY RESOLUTION OF THE BOARD OF ALDERMEN.

MAY 12, 1921.

PROVIDENCE, R.I.
CITY ENGINEER'S OFFICE
STREET LINE DEPT.

February 15, 1930.

052520



OFFICE No.	22130
DRAWER	74
SHEET	B-78