

PROVIDENCE, R.I.
CITY ENGINEER'S OFFICE
STREET LINE DEPT.

February 13, 1930
052510

PLAT OF WAYLAND AVENUE

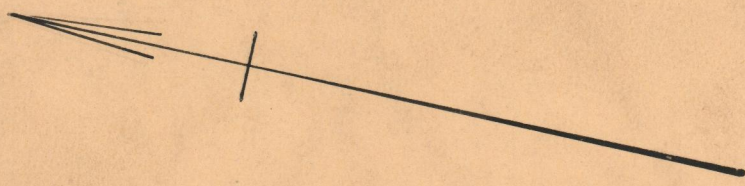
BETWEEN LUZON AVE. AND LAUREL AVE.

SCALE 50 FEET PER INCH.

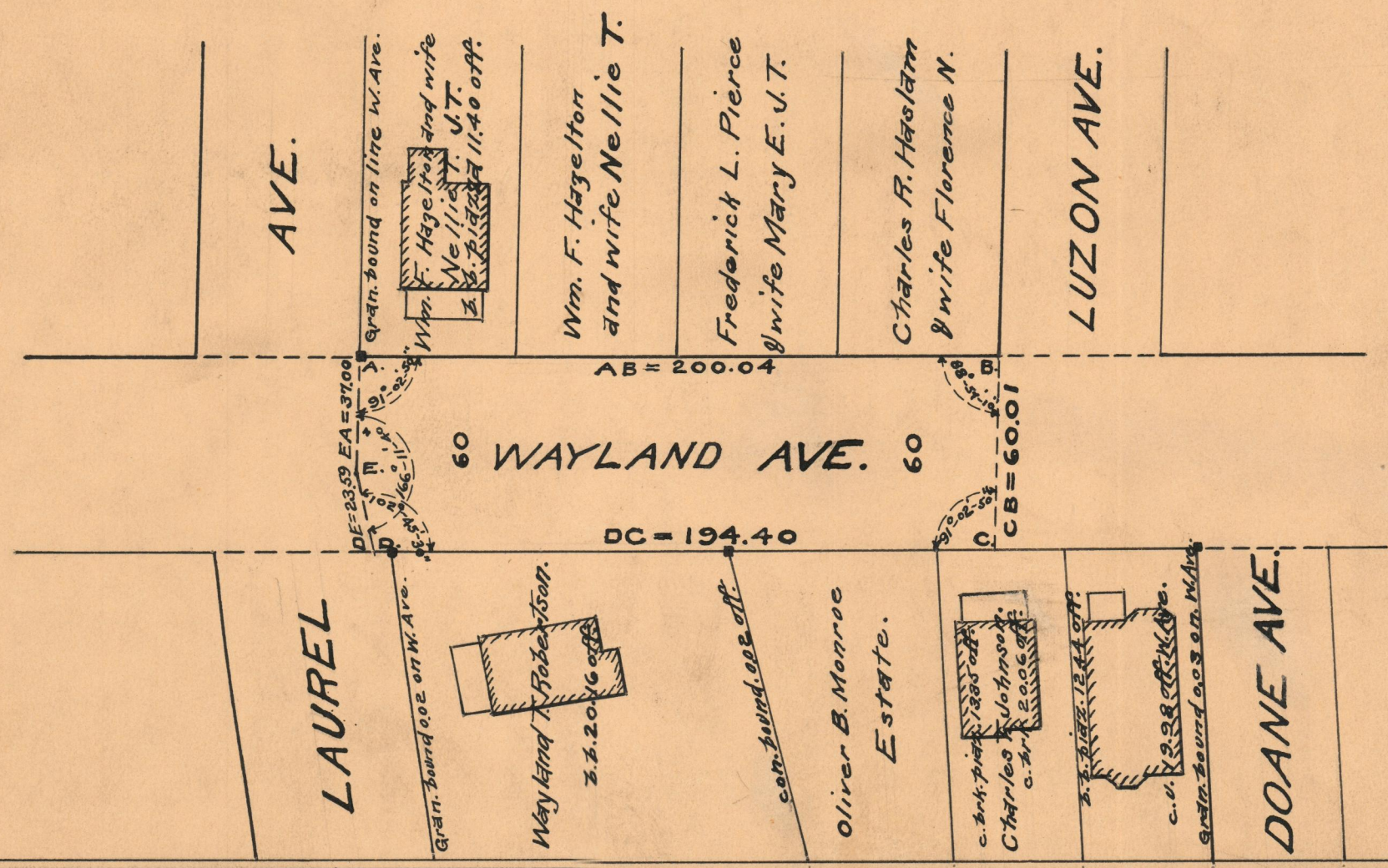
OPENED AND DECLARED A PUBLIC HIGHWAY BY
RESOLUTION OF THE BOARD OF ALDERMEN
MAY 21, 1921.

NOTE:- The area declared a public highway is indicated by the letters ABCDE.

The lines thus fixed agree with the deeds recorded in Deed Book 170, Page 416, Deed Book 187, Page 448, Deed Book 365, Page 270, Deed Book 507, Page 194, and Deed Book 512, Page 168, in the office of the Recorder of Deeds.



Witness, _____
City Clerk.



OFFICE No.	22129
DRAWER	74
SHEET	B-77