

Dec. 16, 1927

050164

NOTE,  
The area established as a public highway is indicated by the letters ABCD  
The lines thus fixed agree with the "Map of Mount Pleasant Plateau belonging to A.L. Andrews" &c. a copy of which is to be found on Plat card 560 in the office of the Recorder of Deeds

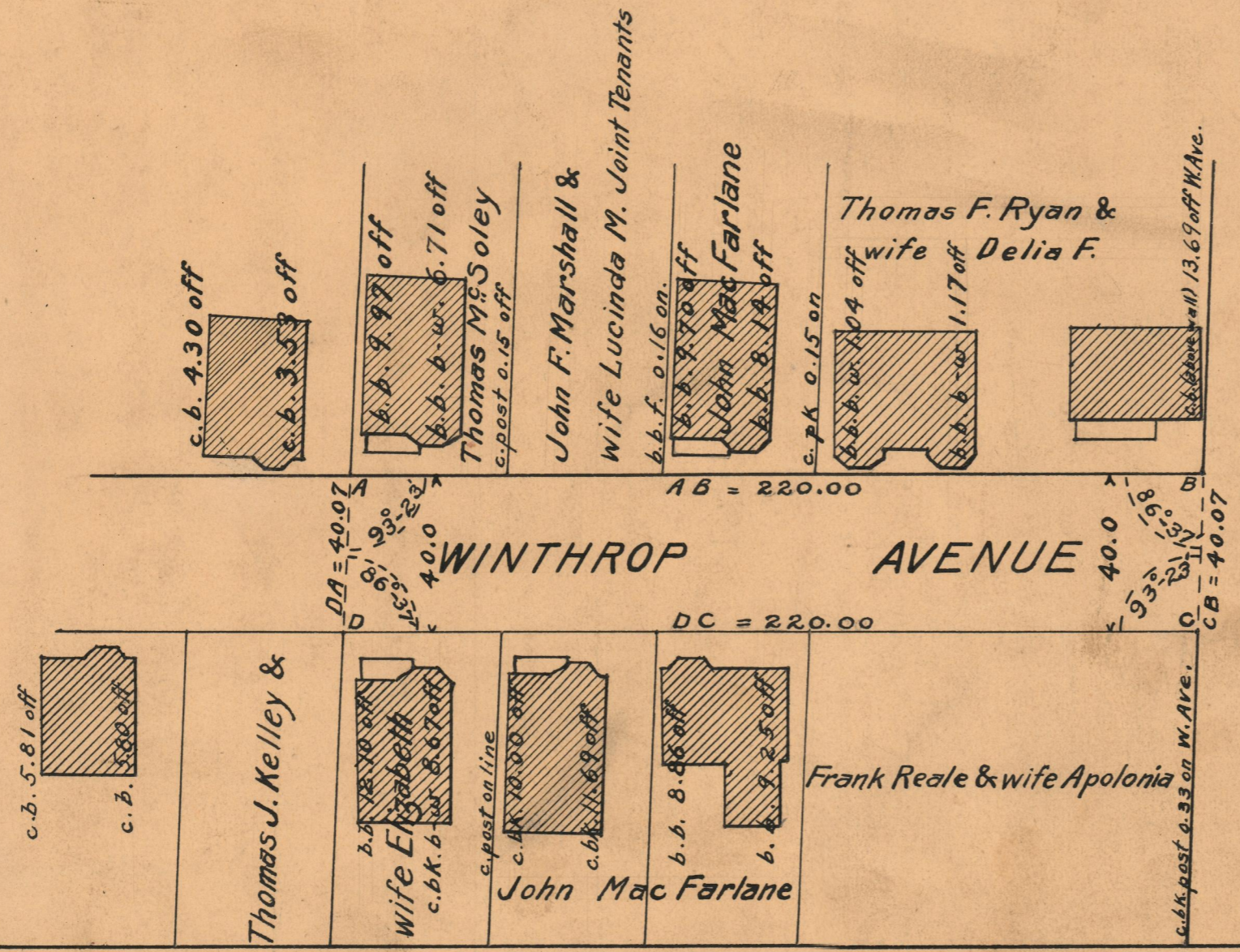
PLAT OF  
**WINTHROP AVENUE**  
AS PLATTED  
FROM CHALKSTONE AVE. NORTHERLY  
ABOUT 220 FT. TO CHANGE OF GRADE

SCALE 40 FEET PER INCH

Established as a Public Highway  
by Resolution of the  
Board of Aldermen  
August 4, 1921



Witness \_\_\_\_\_  
City Clerk.



OFFICE No. 22128  
DRAWER 74  
SHEET B-76