

Note:

The area declared and established as a public highway is indicated by the Letters ABCD.

The lines thus defined agree with the deed recorded in Deed book 424, page 449 in the office of the Recorder of Deeds and with the map entitled "Plan of House Lots in Cranston belonging to Francis Haswill" +c, a copy of which may be found in said Recorder's office on plat card #264.

PLAT OF

# CALLA STREET

FROM BROAD ST. TO  
WEST LINE OF BERNARD ST.

SCALE 50 FEET PER INCH

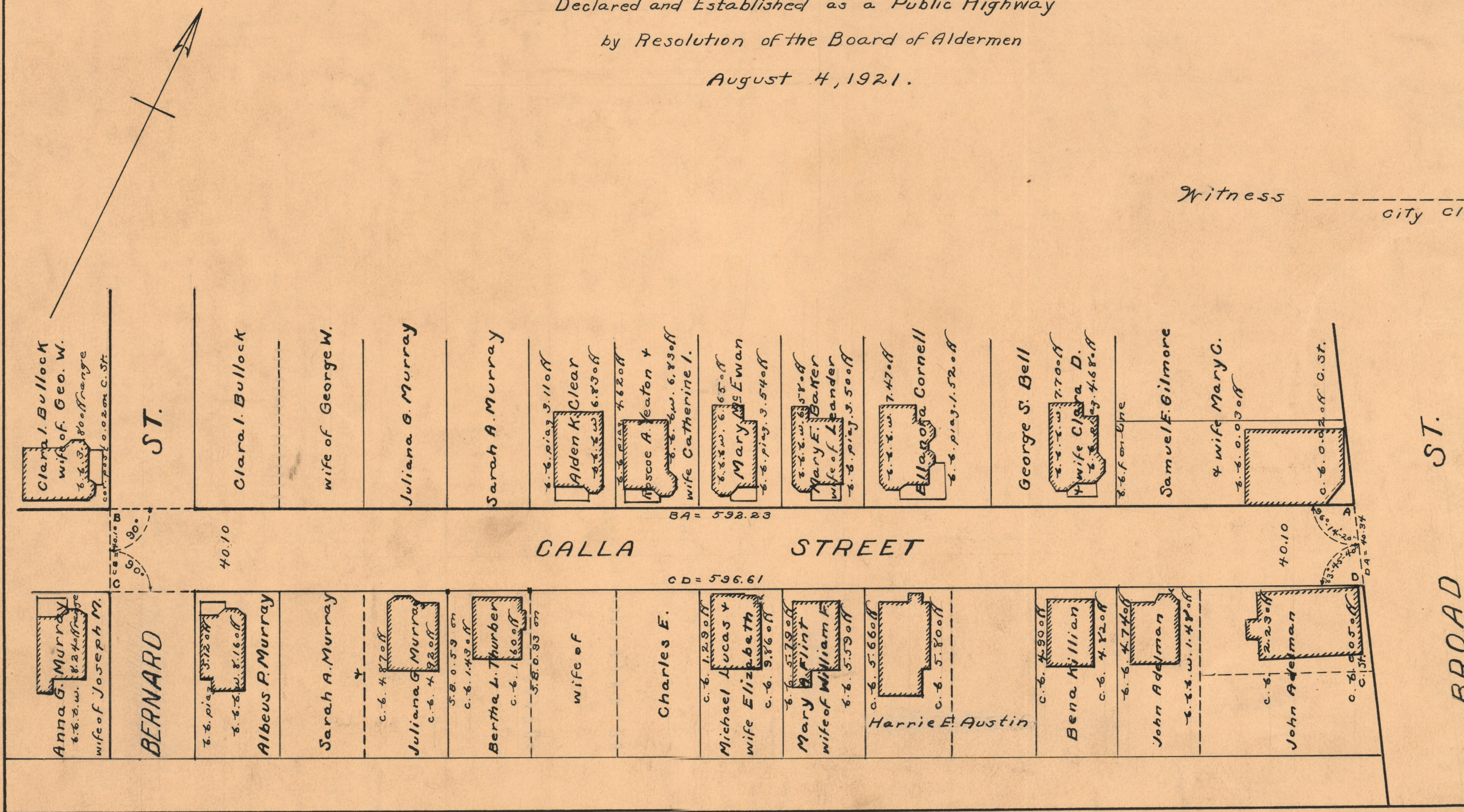
Declared and Established as a Public Highway  
by Resolution of the Board of Aldermen  
August 4, 1921.

PROVIDENCE, R.I.  
CITY ENGINEER'S OFFICE  
STREET LINE DEPT.

Feb. 12, 1930

052503

Witness \_\_\_\_\_  
city clerk



OFFICE No. 22127  
DRAWER 74  
SHEET B-75