

PROVIDENCE, R.I.
CITY ENGINEER'S OFFICE
STREET LINE DEPT.

February 8, 1930.

052494

NOTE

The area declared & established as a public highway is indicated by the letters ABCD.

The lines thus defined substantially conform to the deeds recorded in Deed Book 391, Page 104, Deed Book 400, Page 118, Deed Book 468, Page 287, and Deed Book 528, Page 251 in the office of the Recorder of Deeds, also to the maps in said office on Plat Cards 228 and 606 which are respectively entitled "Plat of House Lots belonging to Benjamin E. Jones" &c. and "Plat of a portion of land shown on Map No. 2 of Land belonging to Nancy K. Bishop." &c.

PILGRIM STREET

PLAT OF

AS PLATTED

FROM HILTON ST. TO STANIFORD ST.

SCALE 50 FEET PER INCH.

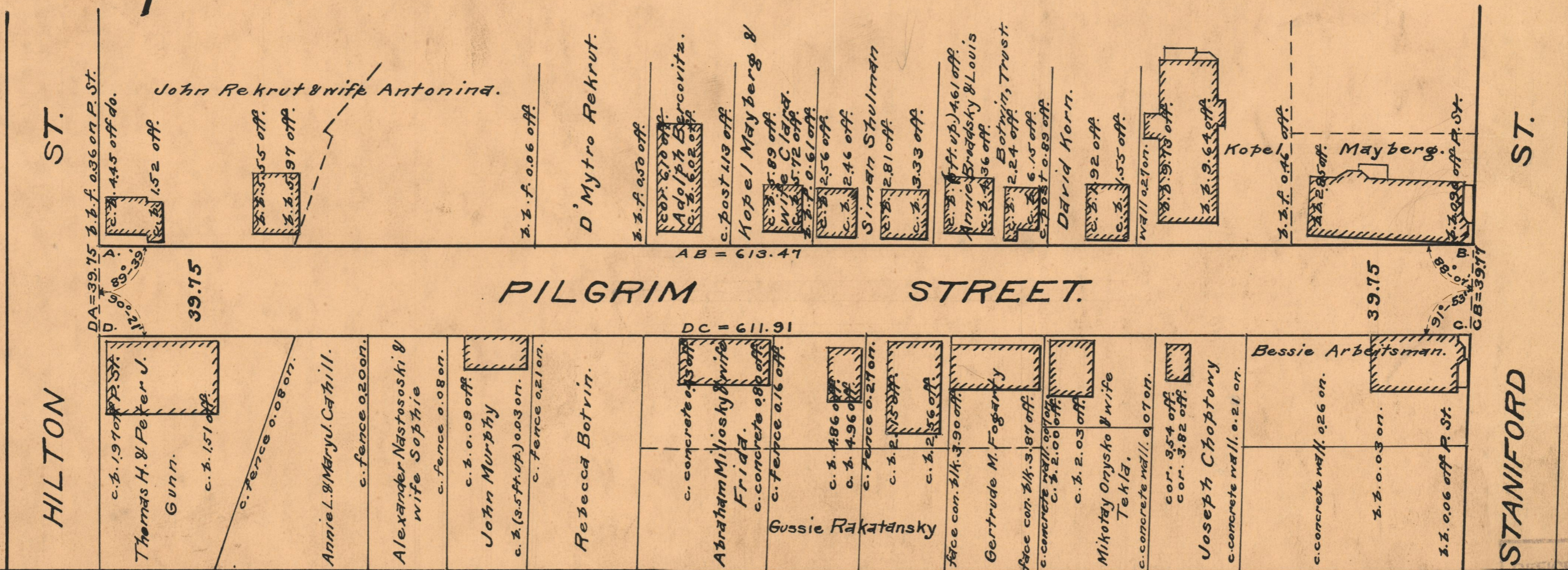
DECLARED AND ESTABLISHED AS A PUBLIC HIGHWAY.

BY RESOLUTION OF THE BOARD OF ALDERMEN.

AUGUST 4, 1921.

Witness,

City Clerk.



2214
DRAWER 74
SHEET B-74