

Note - The area opened as a public highway is indicated by the lines lettered respectively AB, BC, CD, DE, EF + FA, but does not include the inner circle. The location conforms to the "Plat of Angell Court Lots" recorded in Plat Book 35, page 18, in the office of the Recorder of Deeds.

# PLAT OF ANGELL COURT

FROM ANGELL ST. NORTHERLY  
TO ITS TERMINATION

SCALE 30 FEET PER INCH  
Opened as a Public Highway  
by Resolution of the  
Board of Aldermen  
May 2, 1921

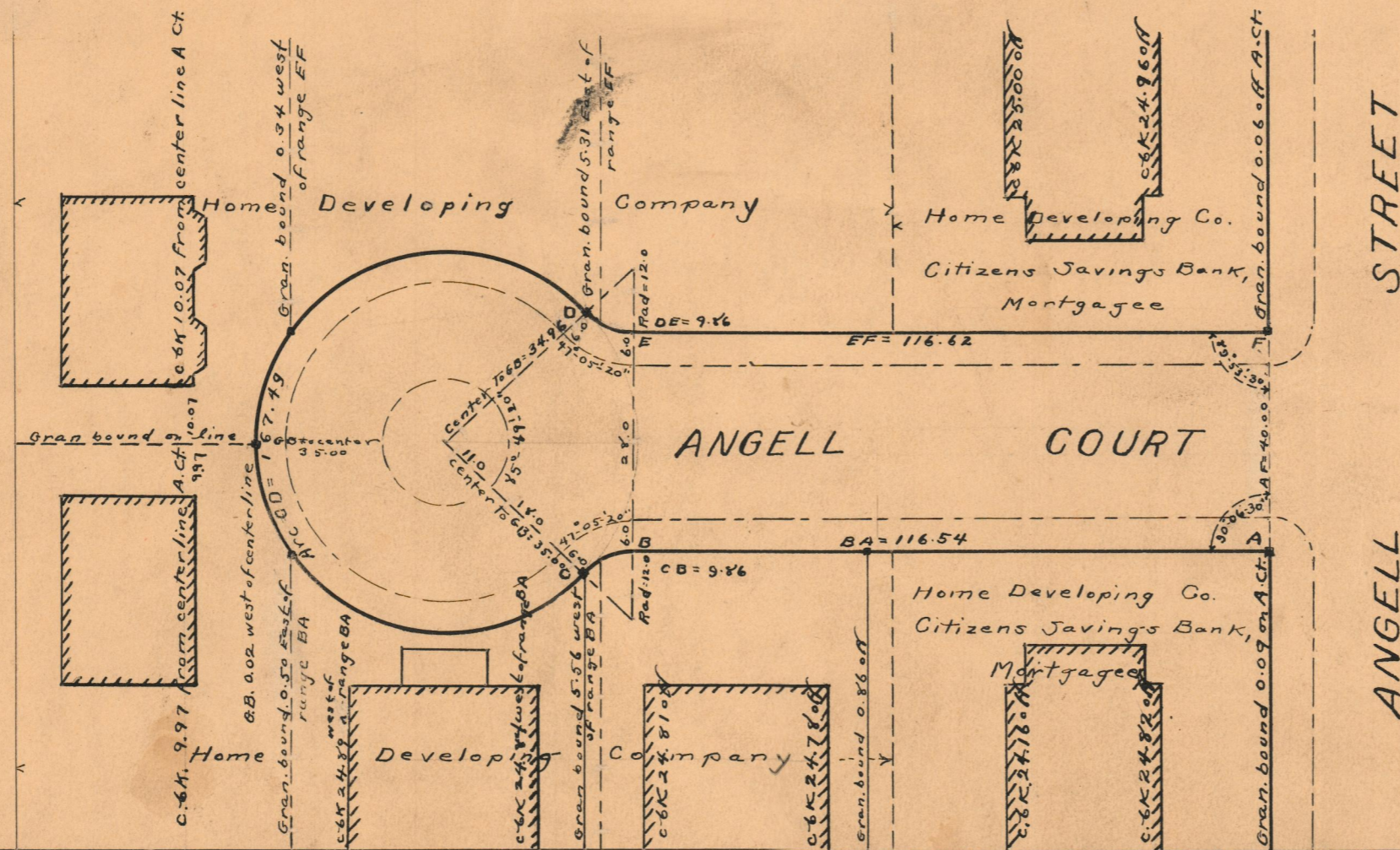
PROVIDENCE, R.I.  
CITY ENGINEER'S OFFICE  
STREET LINE DEPT.

Feb 10, 1930

052495

Witness

City Clerk



OFFICE No. 22067

DRAWER 74

SHEET B-73