

MAY, 15, 1928

050553

Note:- The area established as a public highway is indicated by the letters ABCDE

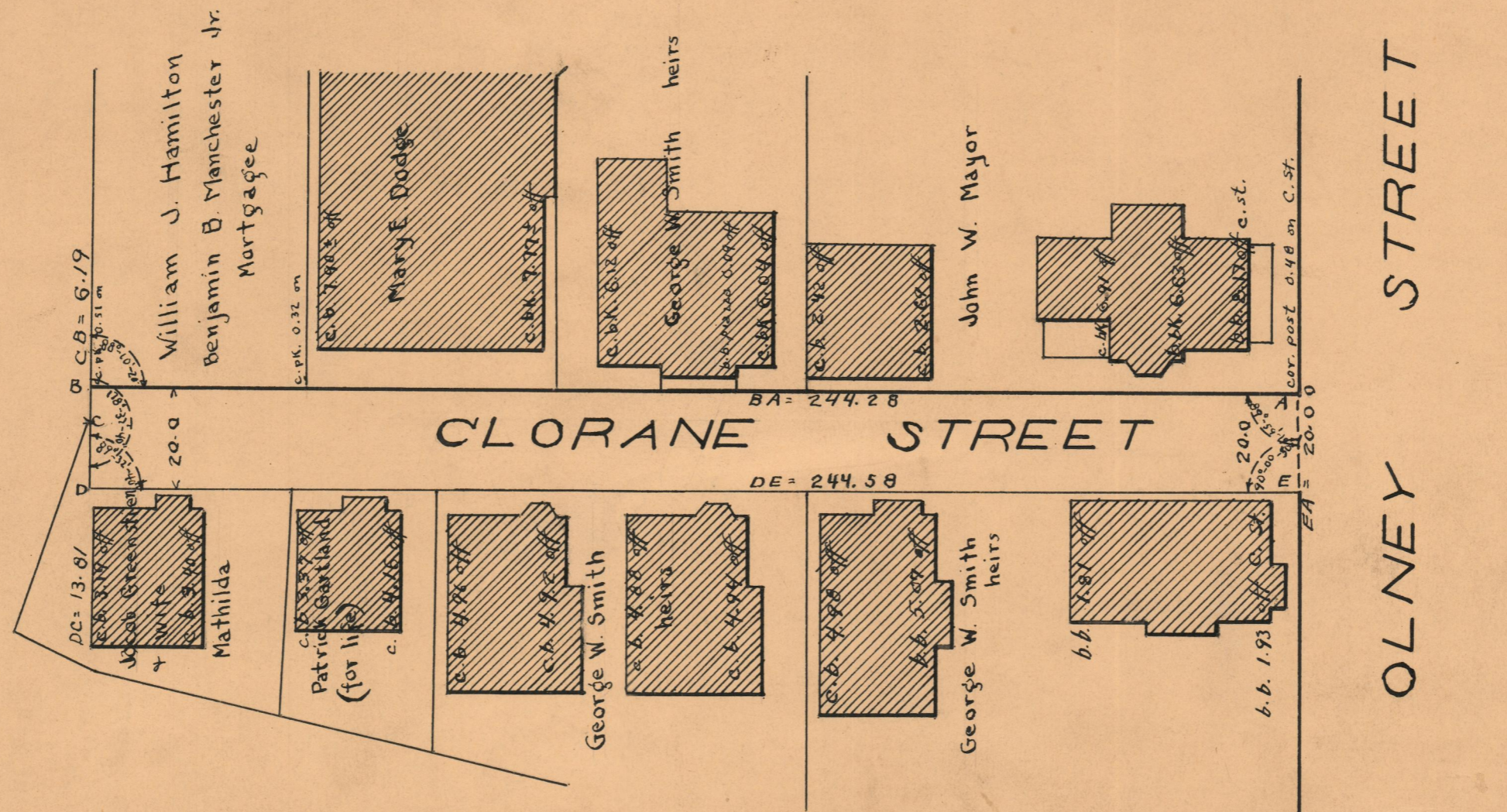
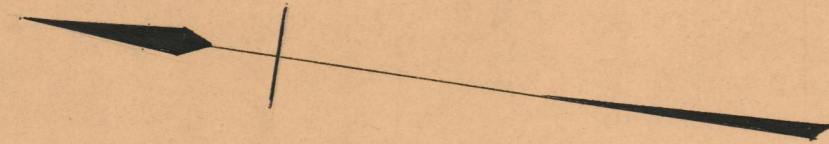
The lines thus defined conform to the "Map of Land belonging to Thomas Y. and George A. Carr, Surveyed and Drawn Sept. 30, 1881 by J. A. Latham," a copy of which is recorded on Plat card # 426, in the office of the Recorder of Deeds.

# PLAT OF CLORANE STREET

AS PLATTED FROM OLNEY ST.  
TO ITS NORTHERLY TERMINATION  
SCALE 30 FEET PER INCH.

*Established as a Public Highway  
by Resolution of the  
Board of Aldermen  
June 16, 1921.*

Witness -----  
City Clerk



OFFICE No. 22066  
DRAWER 74  
SHEET 5-22