

See Note on Sheet One

PLAT OF RANKIN AVENUE

AS PLATTED
FROM CHALKSTONE AVE. TO
PLEASANT VALLEY PARKWAY
IN TWO SHEETS
SCALE 50 FEET PER INCH

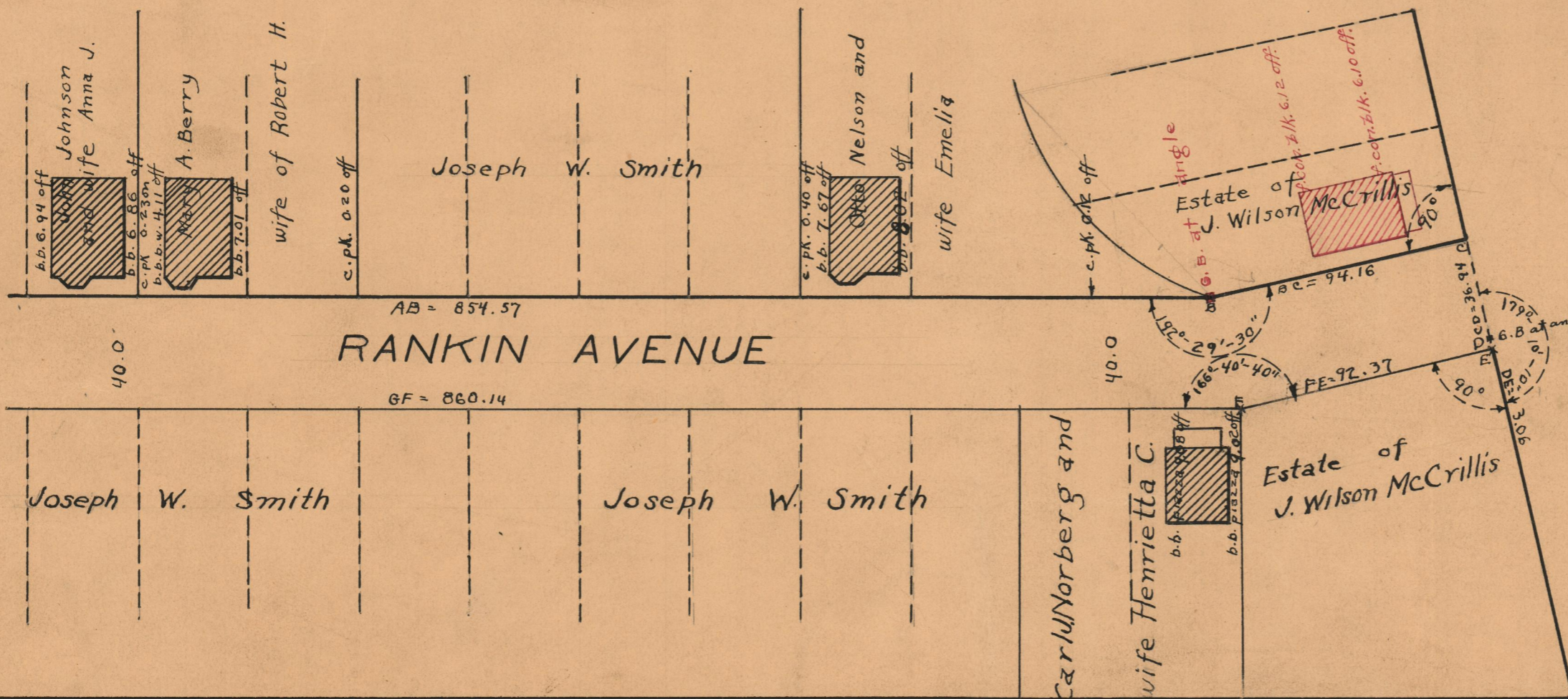
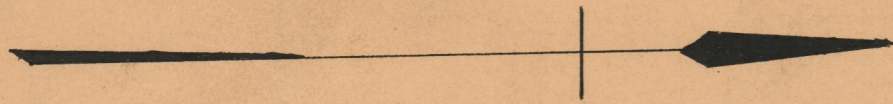
PROVIDENCE, R.I.
CITY ENGINEER'S OFFICE
STREET LINE DEPT.

May 4, 1928

050529

Declared and Established as a Public Highway
by Resolution of the
Board of Aldermen
May 19, 1921.

Witness _____
City Clerk.



OFFICE No.	6908
DRAWER	74
SHEET	B-71