

NOTE

The area declared and established as a public highway is indicated by the letters ABCDEFGA.

The lines thus fixed agree with the deed recorded in Deed book 396, page 197, in the office of Recorder of Deeds, also with the Plat No 4 of House Lots belonging to Sheffield Smith and the plat of "Pleasant Valley Park", owned by Edward P. Masse Land Association, copies of which are to be found in said office on Plat Cards #447 and #990 respectively.

PLAT OF RANKIN AVENUE

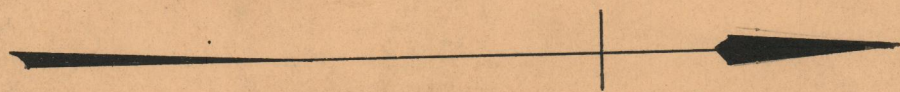
AS PLATTED,
FROM CHALKSTONE AVE. TO
PLEASANT VALLEY PARKWAY
IN TWO SHEETS
SCALE 50 FEET PER INCH

Declared and Established as a Public Highway
by Resolution of the
Board of Aldermen
May, 19, 1921.

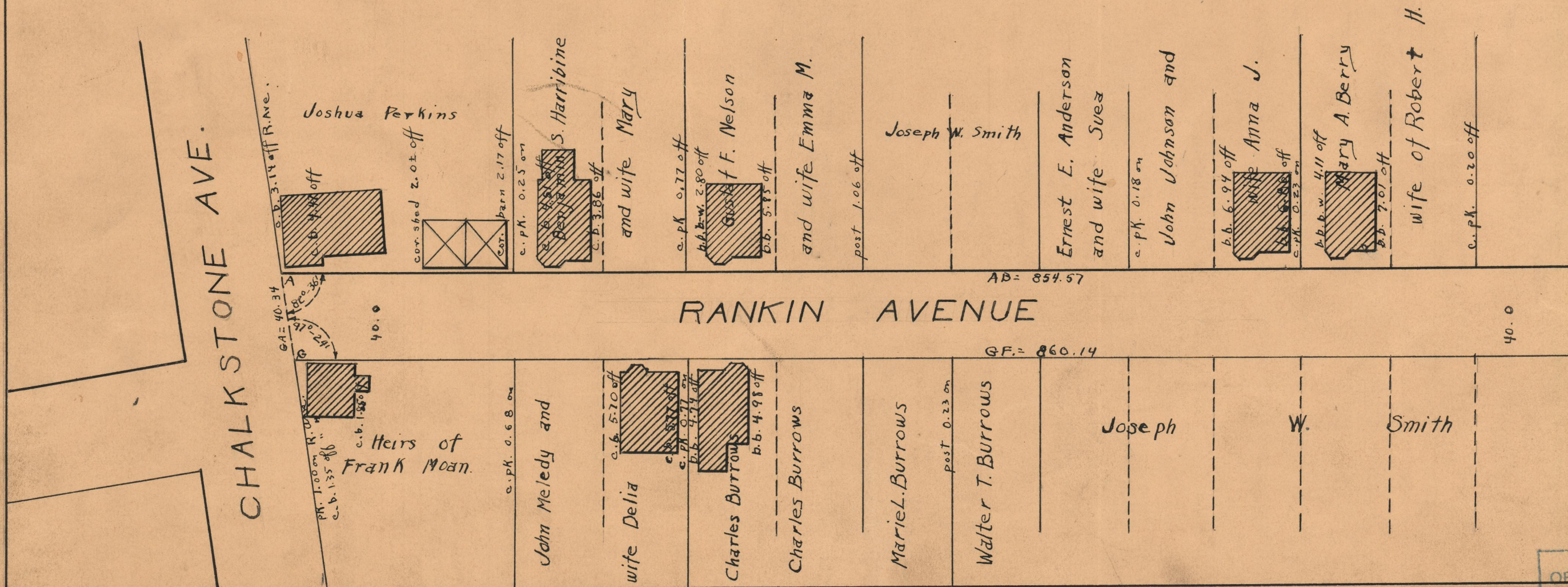
PROVIDENCE, R.I.
CITY ENGINEER'S OFFICE
STREET LINE DEPT.

May 3, 1928

050524



Witness _____
City Clerk



OFFICE No.	5873
DRAWER #	74
SHEET #	B-70