

Note:- The area declared a public highway is indicated by the letters ABCD
 The lines thus fixed agree with the deeds recorded in Deed book 523, page 471, Deed book 583, page 359, and Deed book 601, page 445, and 446, in the office of the Recorder of Deeds

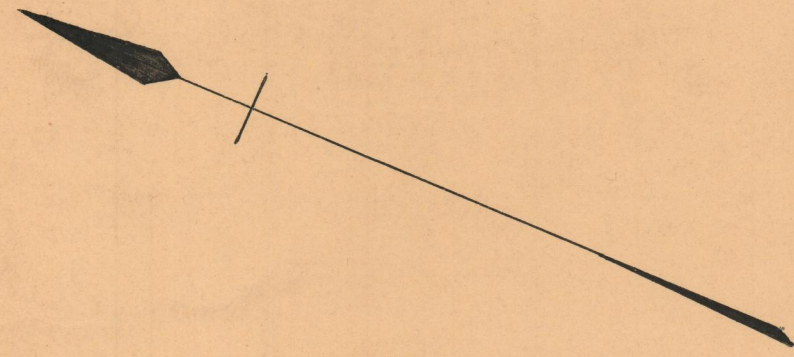
PLAT OF EMERSON STREET

FROM GALLATIN ST. TO SUMTER ST.

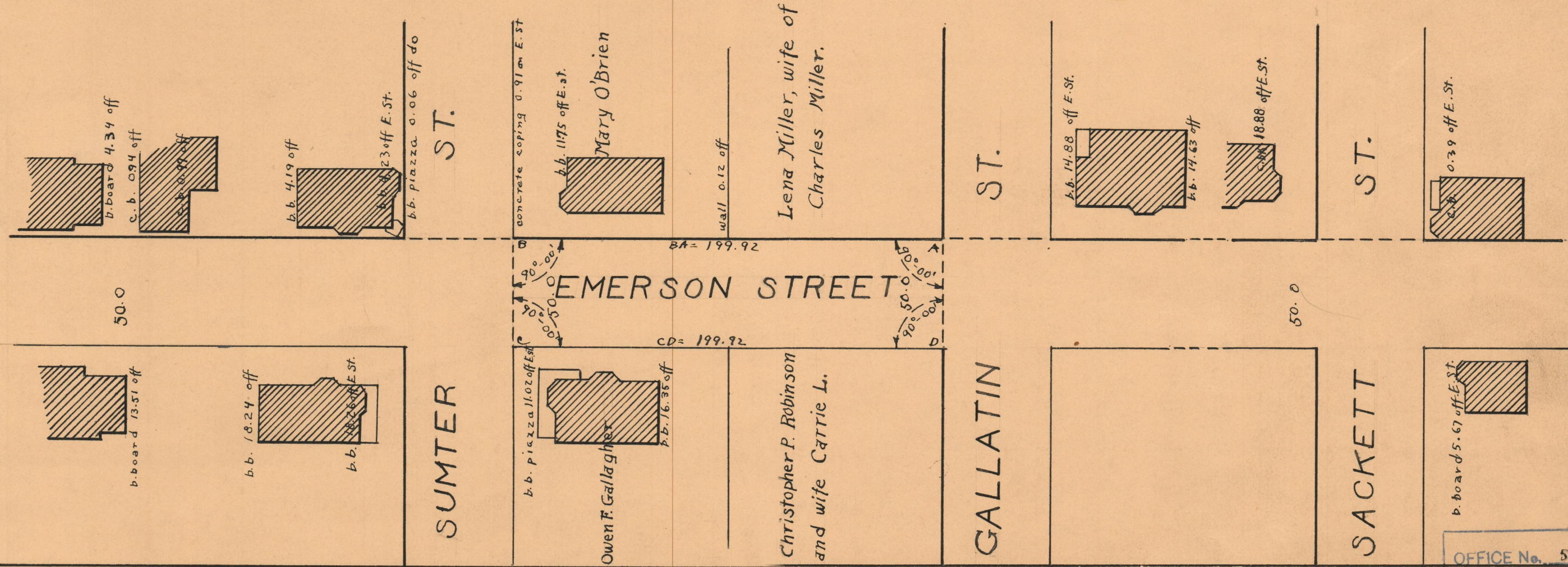
SCALE 50 FEET PER INCH

Declared a Public Highway
 by resolution of the
 Board of Aldermen
 April, 7, 1921.

PROVIDENCE, R.I.
 CITY ENGINEER'S OFFICE
 STREET LINE DEPT.
 May 2, 1928
 050519



Witness _____
 City Clerk



OFFICE No. 5872
 DRAWER 74
 SHEET B-69