

Note: The area declared a public highway is indicated by the letters A.B.C.D.
The lines thus fixed agree with the deeds recorded in Deed Book 409, page 494, Deed Book 410, page 184, and Deed Book 595, page 385, in the office of the Recorder of Deeds.

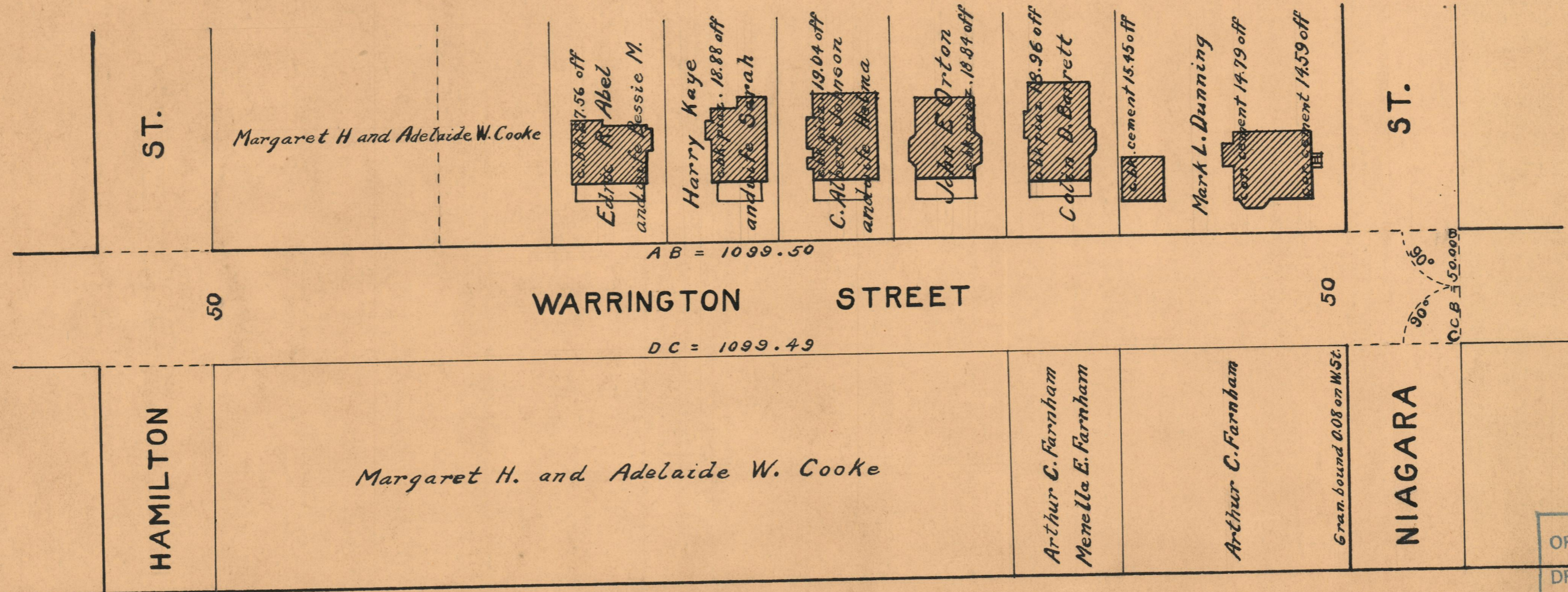
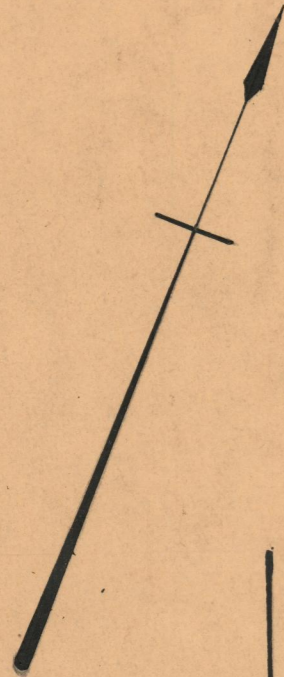
PLAT OF WARRINGTON STREET

FROM THE EAST LINE OF
NIAGARA ST. TO MELROSE ST.

IN TWO SHEETS

SCALE 50 FEET PER INCH

DECLARED A PUBLIC HIGHWAY BY RESOLUTION
OF THE BOARD OF ALDERMEN
JANUARY 20, 1921



OFFICE No.	21936
DRAWER	74
SHEET	B-67