

PROVIDENCE, R.I.
CITY ENGINEER'S OFFICE
STREET LINE DEPT.
Feb. 15, 1921

044813

PLAT OF CHAD BROWN STREET, AS FLATTED, FROM CENTER OF RUGGLES ST. TO CAMDEN AVE.

SCALE 50 FEET PER INCH.

Declared and Established as a Public Highway,
by Resolution of the
Board of Aldermen.

February 17, 1921.

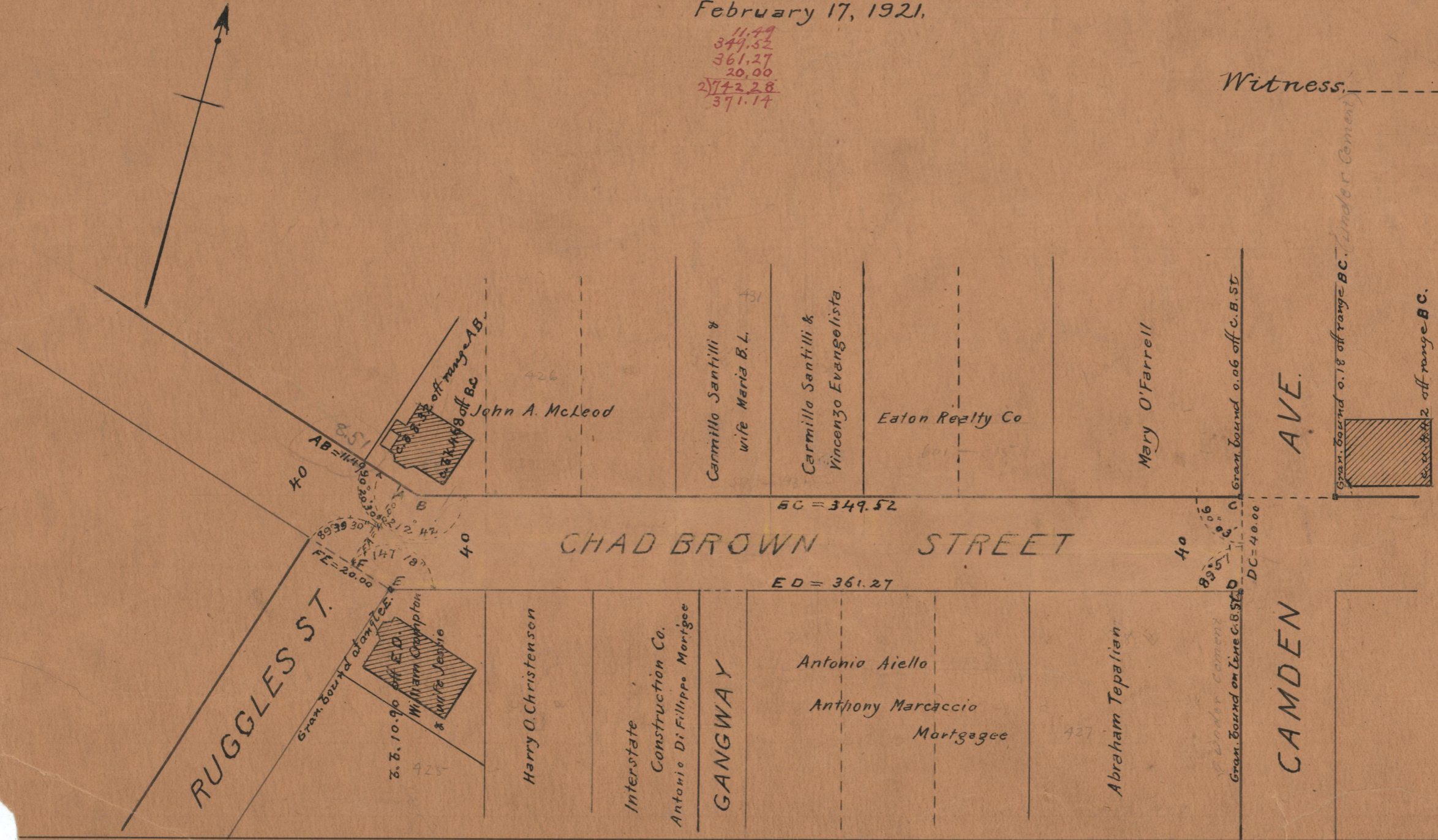
11.79
349.52
361.27
20.00
2)772.28
371.14

Note, The area declared and established as a public highway is indicated by the letters ABCDEFA.

The lines thus fixed agree with the deeds recorded in Deed book 595, pages 425, 426, 427 and 431, and Deed book 601, page 315, in the office of the Recorder of Deeds, also with the plats on Plat cards 325 and 329, in said office, which define the lines of Union St., now called Chad Brown St.

Witness

City Clerk



74
B65

OFFICE No. 21882
DRAWN BY
SHEET