

PROVIDENCE, R.I.
CITY ENGINEER'S OFFICE
STREET LINE DEPT.
Dec. 31, 1920

044730

Note, The area declared a public highway
is indicated by the letters A B C D.
The lines thus fixed conform to the deeds
recorded in Deed book 548, page 205, and Deed
book 592, pages 345, 363 and 364, in the office
of the Recorder of Deeds

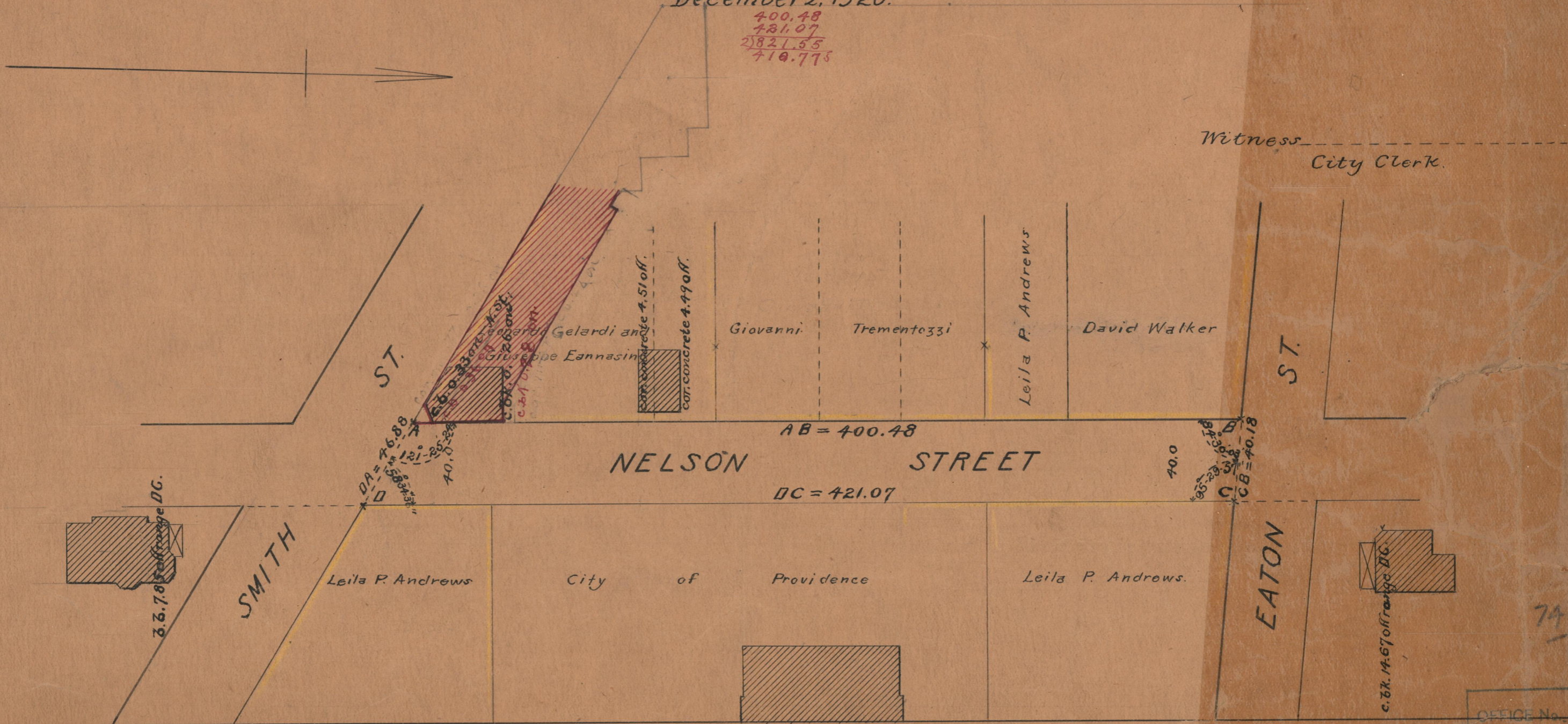
PLAT OF NELSON STREET

FROM SMITH ST. TO EATON ST.
SCALE 50 FEET PER INCH

DECLARED A PUBLIC HIGHWAY
BY RESOLUTION OF THE
BOARD OF ALDERMEN,
December 2, 1920.

400.48
421.07
2821.55
410.775

Witness
City Clerk.



74-B
64

OFFICE No. 21
DRAWER