

PROVIDENCE, R.I.  
CITY ENGINEER'S OFFICE  
STREET LINE DEPT.  
Dec. 31, 1920

044728

# PLAT OF JASTRAM STREET

FROM SMITH ST. TO EATON ST.  
SCALE 50 FEET PER INCH.

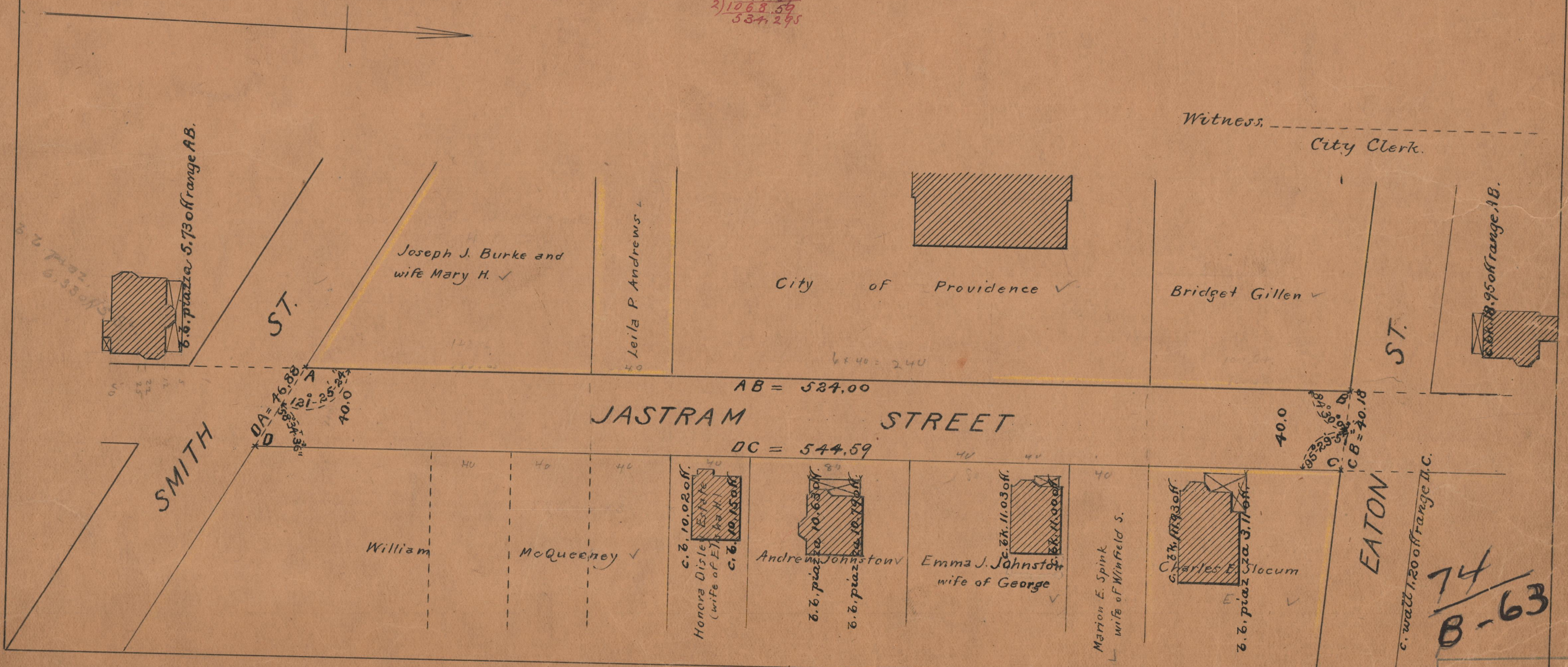
DECLARED A PUBLIC HIGHWAY  
BY RESOLUTION OF THE  
BOARD OF ALDERMEN,

December 2, 1920.

524.00  
544.59  
2) 1068.59  
534.295

Note, The area declared a public highway is indicated by the letters A B C D.  
The lines thus fixed conform to the deeds recorded in Deed book 544, page 400, Deed book 548, page 205 and Deed book 592, pages 331, 332, 333, 342, 343, 363 and 375 in the office of the Recorder of Deeds.

Witness \_\_\_\_\_  
City Clerk.



74  
B63

74  
B-63

OFFICE N.