

Note: The area declared and established as a public highway is indicated by the letters ABCD.

The lines thus fixed agree with the deed recorded in Deed book 473, page 429, in the office of the Recorder of Deeds and also with the plat on Card 528 in said office, upon which Peter St. was originally platted.

PLAT OF PETER STREET

AS PLATTED

FROM CHARLES ST. TO THE ANGLE

SCALE 50 FEET PER INCH

Declared and Established as a Public Highway

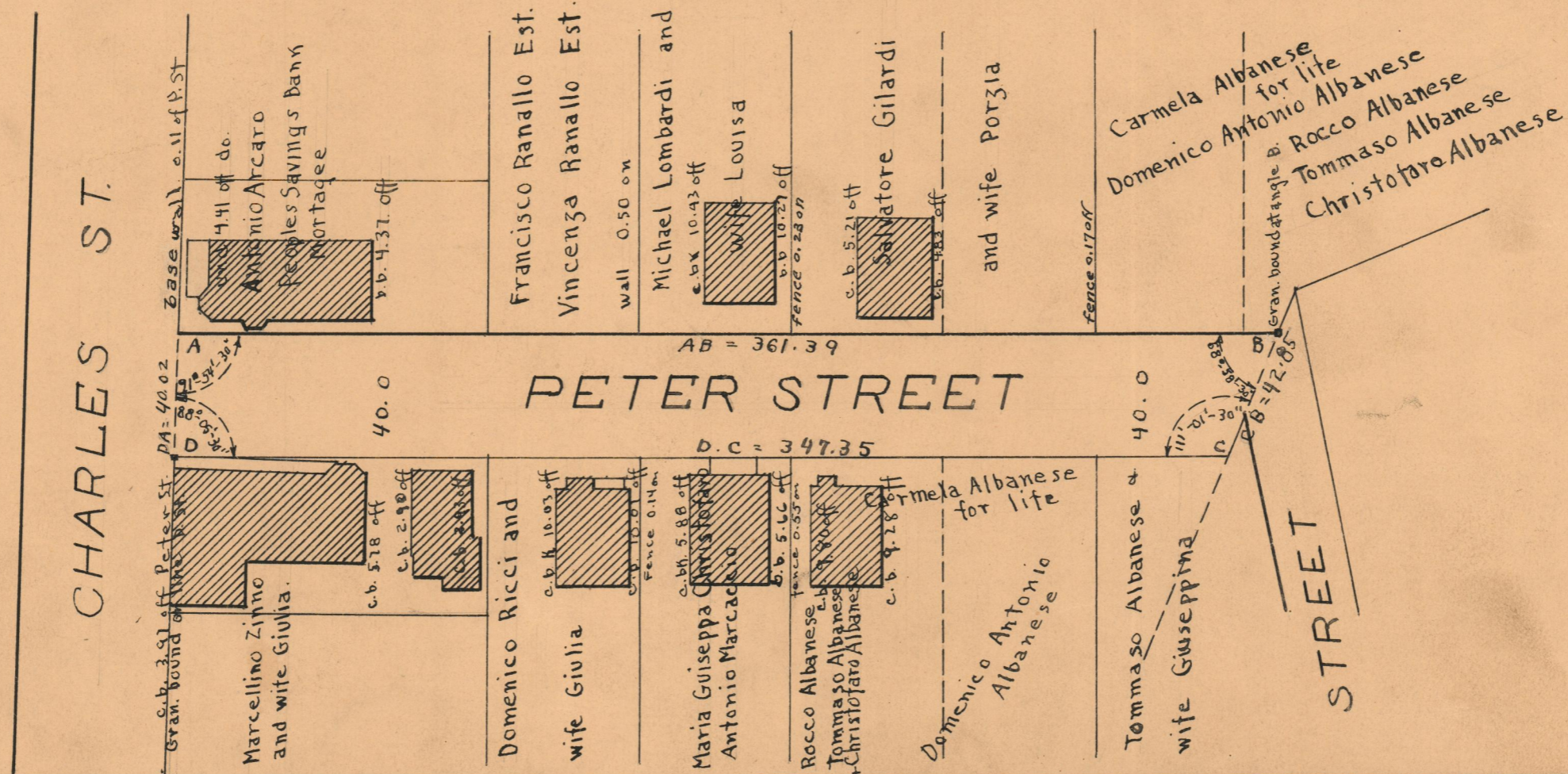
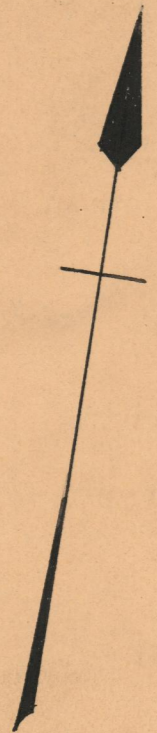
by Resolution of the
Board of Aldermen,
December, 16, 1920

PROVIDENCE, R.I.
CITY ENGINEER'S OFFICE
STREET LINE DEPT.

May 1-1928

050517

Witness _____
City Clerk



OFFICE No.	21860
DRAWER	74
SHEET	B-62