

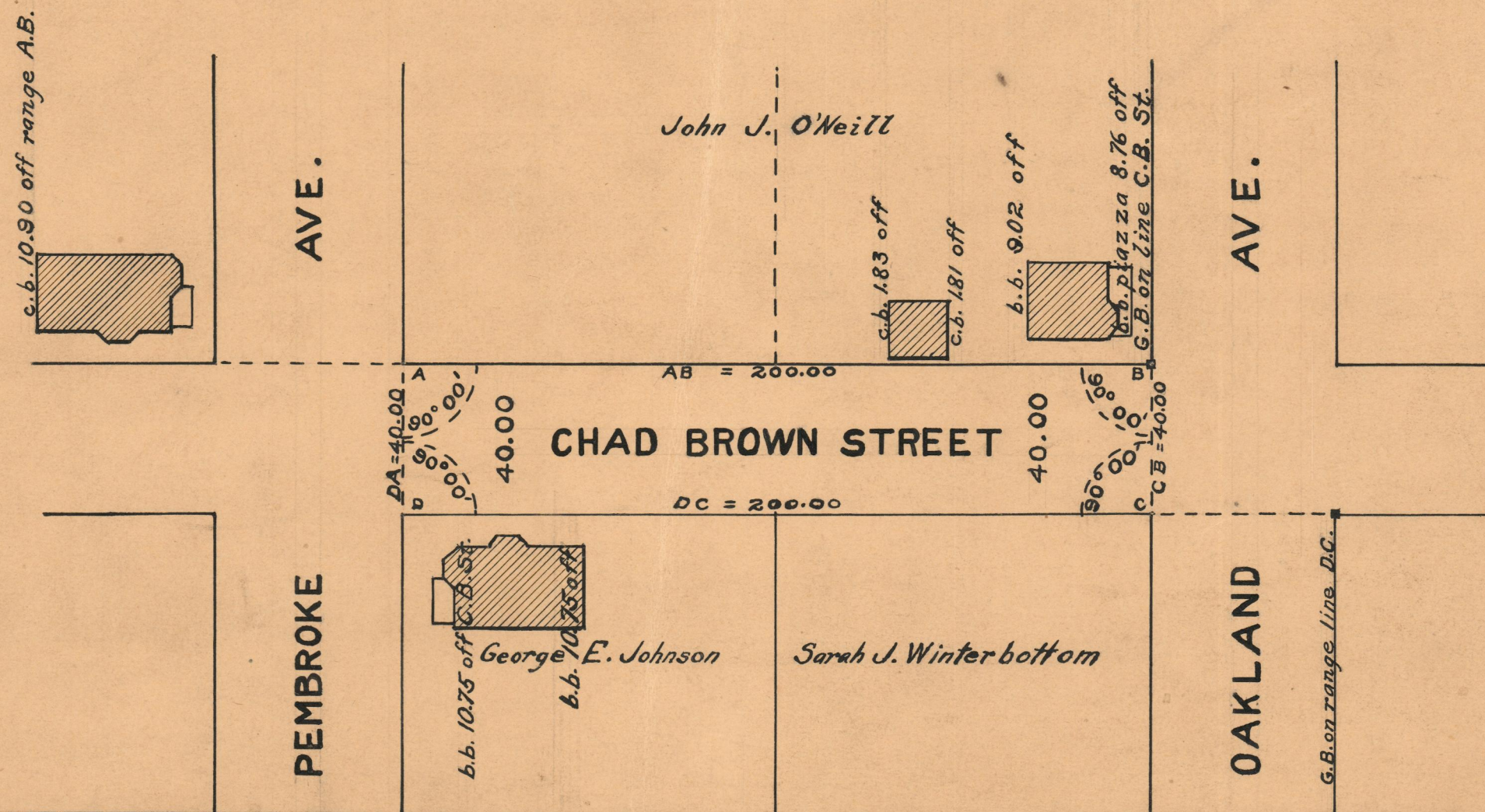
PROVIDENCE, R.I.
CITY ENGINEER'S OFFICE
STREET LINE DEPT.
April 25, 1927
049499

Note the area declared and established as a public highway is indicated by the letters ABCD
The lines thus fixed conform to the deeds recorded in Deed book 577 page 377 and Deed Book 589 page 261 in the office of the Recorder of Deeds and also to the "Oakland Villa Plat" surveyed in June 1906 and duly recorded in said office in Plat Book 30 at page 6.

PLAT OF CHAD BROWN STREET

AS PLATTED
FROM PEMBROKE AVE. TO OAKLAND AVE.
SCALE 40 FEET PER INCH

DECLARED AND ESTABLISHED A PUBLIC HIGHWAY BY RESOLUTION
OF THE BOARD OF ALDERMEN
DECEMBER 16, 1920



OFFICE No. 21855
DRAWER " 74
SHEET " B-57