

Feb. 24, 1928

050341

Note. The area declared and established as a public highway is indicated by the letters ABCD.

The lines thus fixed agree with the deeds recorded in Deed book 503 page 450, Deed book 515 page 262, and Deed book 561 page 248 in the office of the Recorder of Deeds and also with the plat on Card 555, in said office upon which this portion of Brewster Street was originally platted.

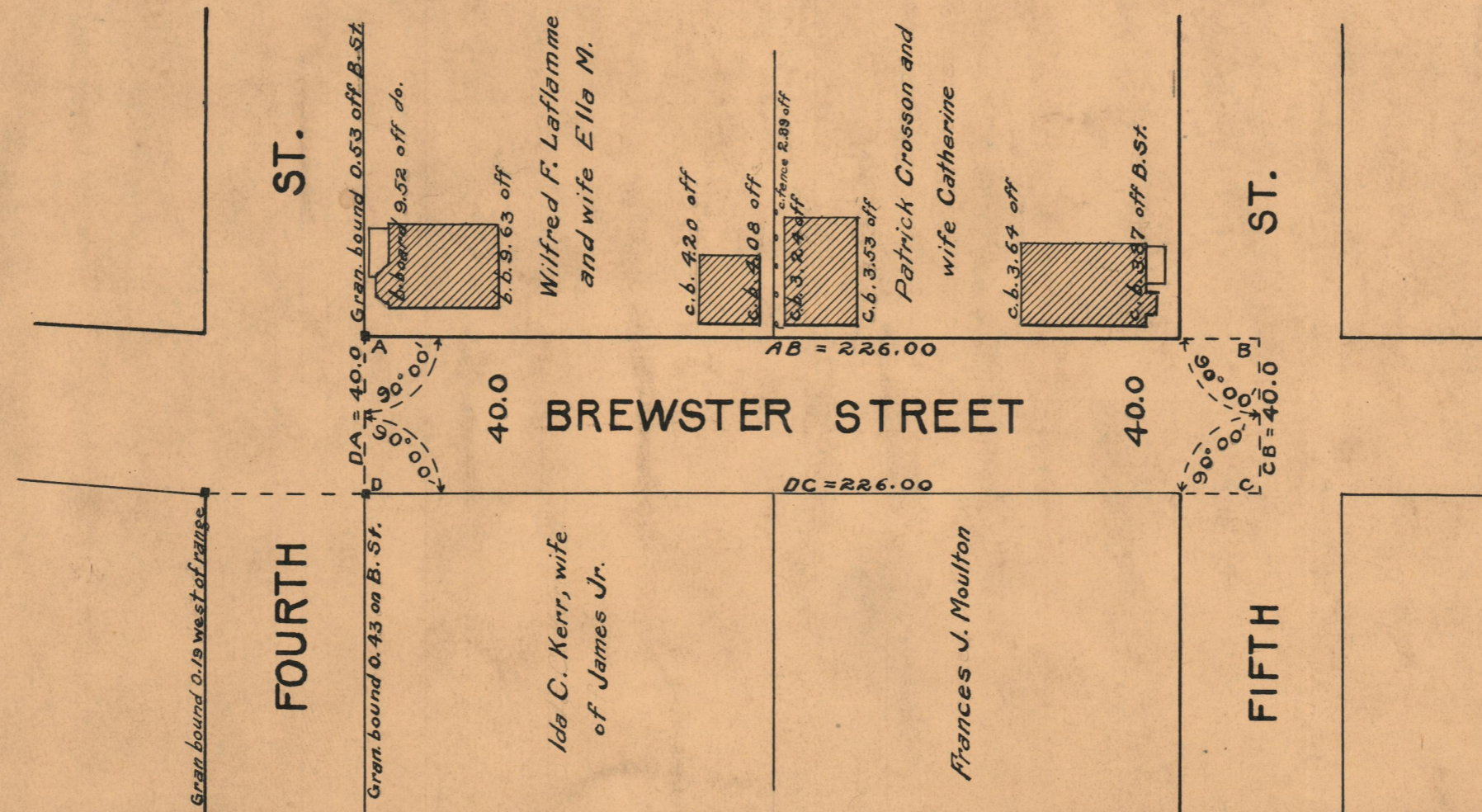
# PLAT OF BREWSTER STREET

AS PLATTED, FROM FOURTH ST.  
TO THE CENTER LINE OF FIFTH ST.

SCALE 40 FEET PER INCH

Declared and established as a Public Highway

by Resolution of the  
Board of Aldermen  
December 16, 1920



OFFICE No.	21854
DRAWER "	74
SHEET "	B-56

33.3  
10.8  
22.5