

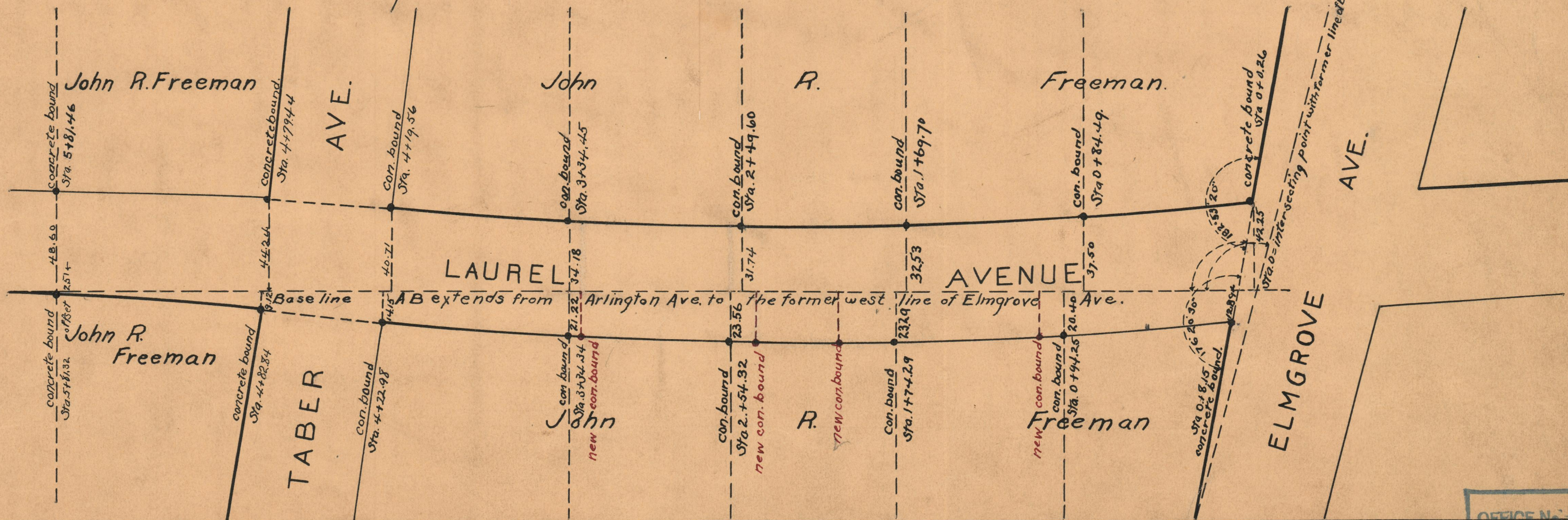
See note on Sheet One.

PROVIDENCE, R.I.  
CITY ENGINEER'S OFFICE  
STREET LINE DEPT.  
Mar. 8, 1927  
049378

PLAT OF  
**LAUREL AVENUE**  
FROM ARLINGTON AVE TO ELMGROVE AVE.  
IN TWO SHEETS  
SCALE 50 FEET PER INCH

Opened and Repaired  
by Order of the  
Board of Aldermen  
Passed June 19, 1919.

Witness \_\_\_\_\_  
City Clerk.



74  
B-49

OFFICE No.	21797
DRAWER	74
SHEET	B-49