

PLAT OF FREEMAN PARKWAY

FROM ARLINGTON AVE TO ELMGROVE AVE.

IN TWO SHEETS

SCALE 50 FEET PER INCH.

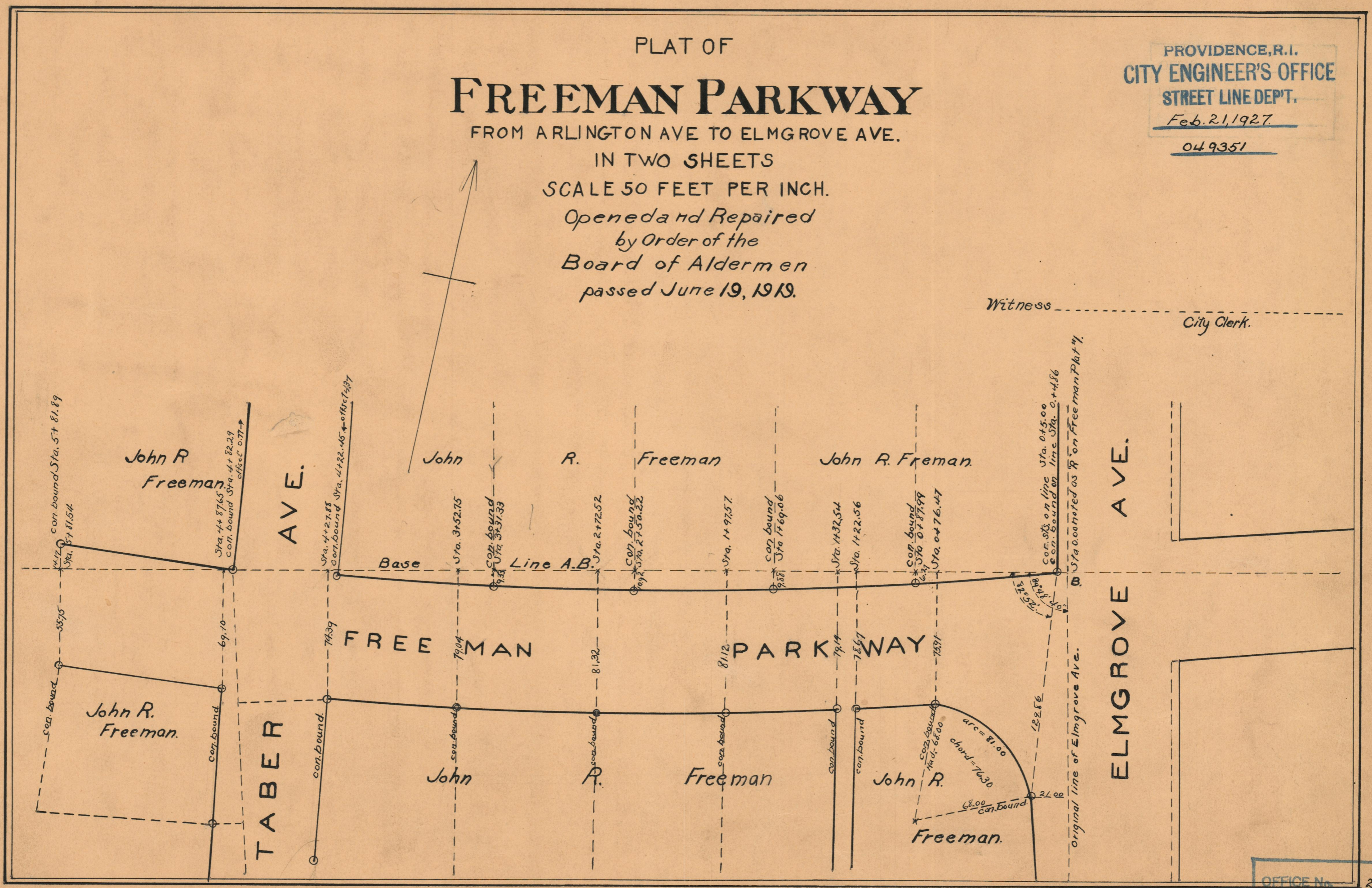
Opened and Repaired
by Order of the
Board of Aldermen
passed June 19, 1919.

PROVIDENCE, R.I.
CITY ENGINEER'S OFFICE
STREET LINE DEPT.

Feb. 21, 1927.

049351

Witness _____
City Clerk.



OFFICE No.	21795
DRAWER	74
SHEET	B-47