

Note, Freeman Parkway was originally platted on "Plat No. 1 of Land in Providence, R.I., belonging to John R. Freeman." See copy on Plat card #1036 in the office of the Recorder of Deeds. Also see copy of Plat No. 2, a revision of Plat No. 1 on card #1048.

By the terms of these plats the lines of the streets and lots thereon are fixed by the concrete bounds.

The position of these bounds and their location relative to each other are defined by stations on, and offsets measured at right angles to, the base line A.B, running from point west of Arlington Ave. to the original west line of Elmgrove Ave.

The portion of Freeman Parkway to be Opened and Repaired as ordered extends from the west line of Arlington Ave. to the west line of Elmgrove Ave. as widened by the same order.

PLAT OF FREEMAN PARKWAY

FROM ARLINGTON AVE TO ELMGROVE AVE.

IN TWO SHEETS

SCALE 50 FEET PER INCH.

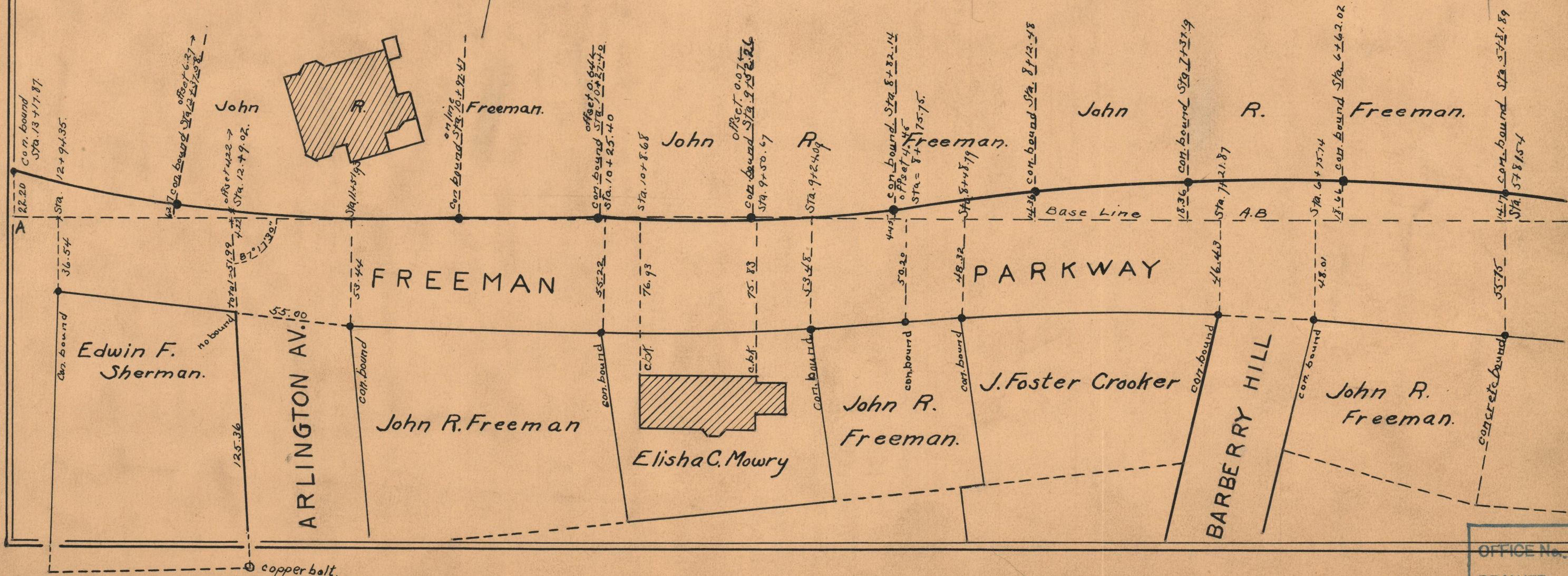
Opened and Repaired
by Order of the
Board of Aldermen
passed June 19, 1919.

PROVIDENCE, R.I.
CITY ENGINEER'S OFFICE
STREET LINE DEPT.
Feb. 25, 1927

049357

Witness. _____

City Clerk. _____



OFFICE No.	21794
DRAWN "	74
SHEET "	B-46