

Note, The location and limits of those parts of Elmgrove Avenue ordered opened and repaired are indicated by the letters ABCDKLA and the letters GHIJG.

The lines thus fixed agree with the map entitled "Plat No. 1, of land in Providence, R.I., belonging to John R. Freeman" a copy of which may be found on plat card 1036, in the office of the Recorder of Deeds.

PLAT OF ALL THOSE PARTS OF ELMGROVE AVENUE

NOT ALREADY LAID OUT AS A PUBLIC HIGHWAY
FROM THE NORTHERLY LINE OF FREEMAN PARKWAY
TO THE SOUTHERLY LINE OF PLAT NO. 1 BELONGING TO

JOHN R. FREEMAN
SCALE 50 FEET PER INCH

Opened and Repaired
by Order of the
Board of Aldermen
June 19, 1919

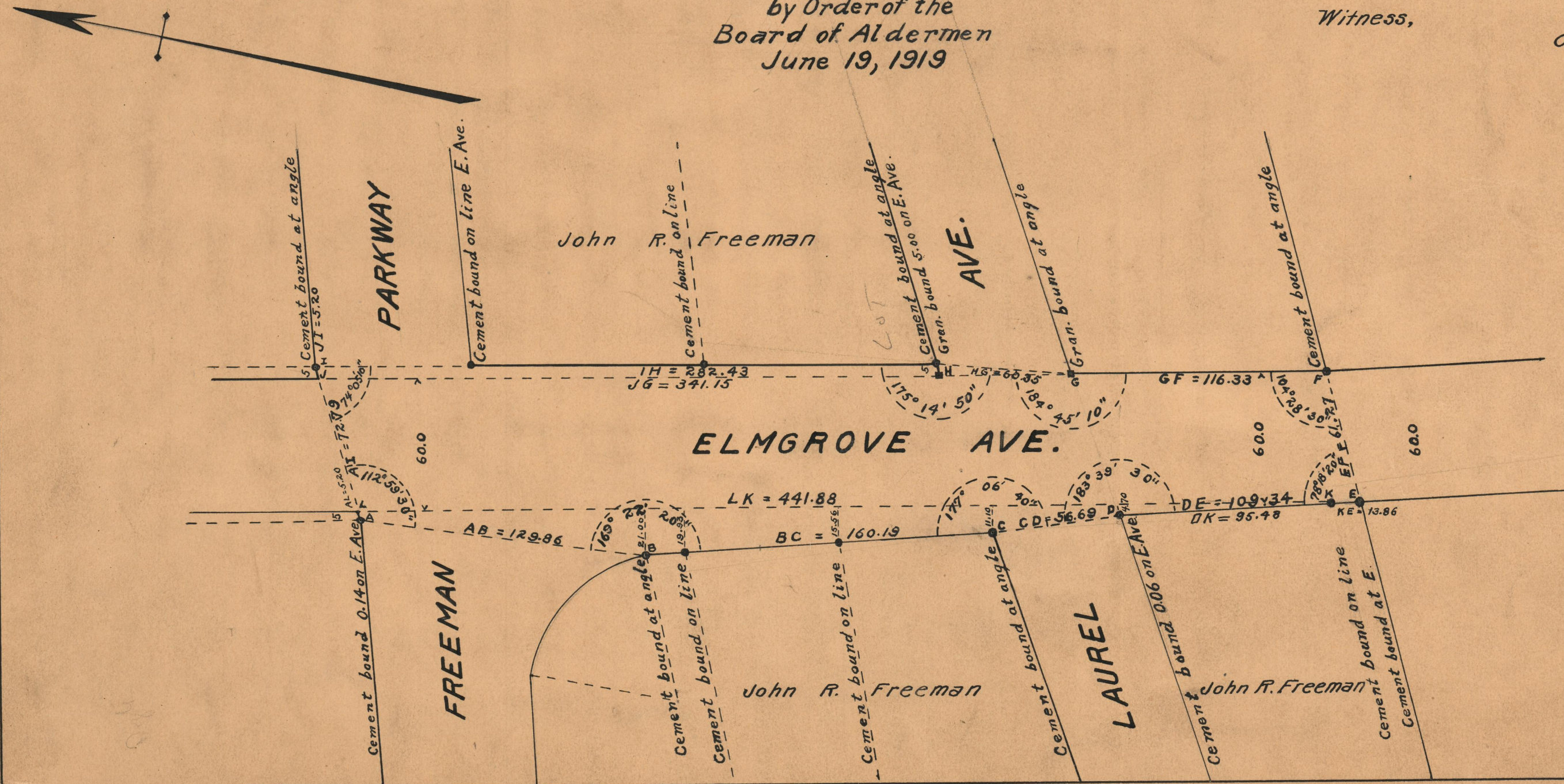
PROVIDENCE, R.I.
CITY ENGINEER'S OFFICE
STREET LINE DEPT.
Aug. 15, 1927.

049851

Witness,

City Clerk.

282.43 129.86
60.35 160.19
116.82 36.67
459.11 109.34
+ 36.08 436.08
21795.19
447.595



OFFICE No. 21793
DRAWER " 74
SHEET " B-45