

PROVIDENCE, R.I.
 CITY ENGINEER'S OFFICE
 STREET LINE DEPT.
 Apr. 14, 1920
 044401

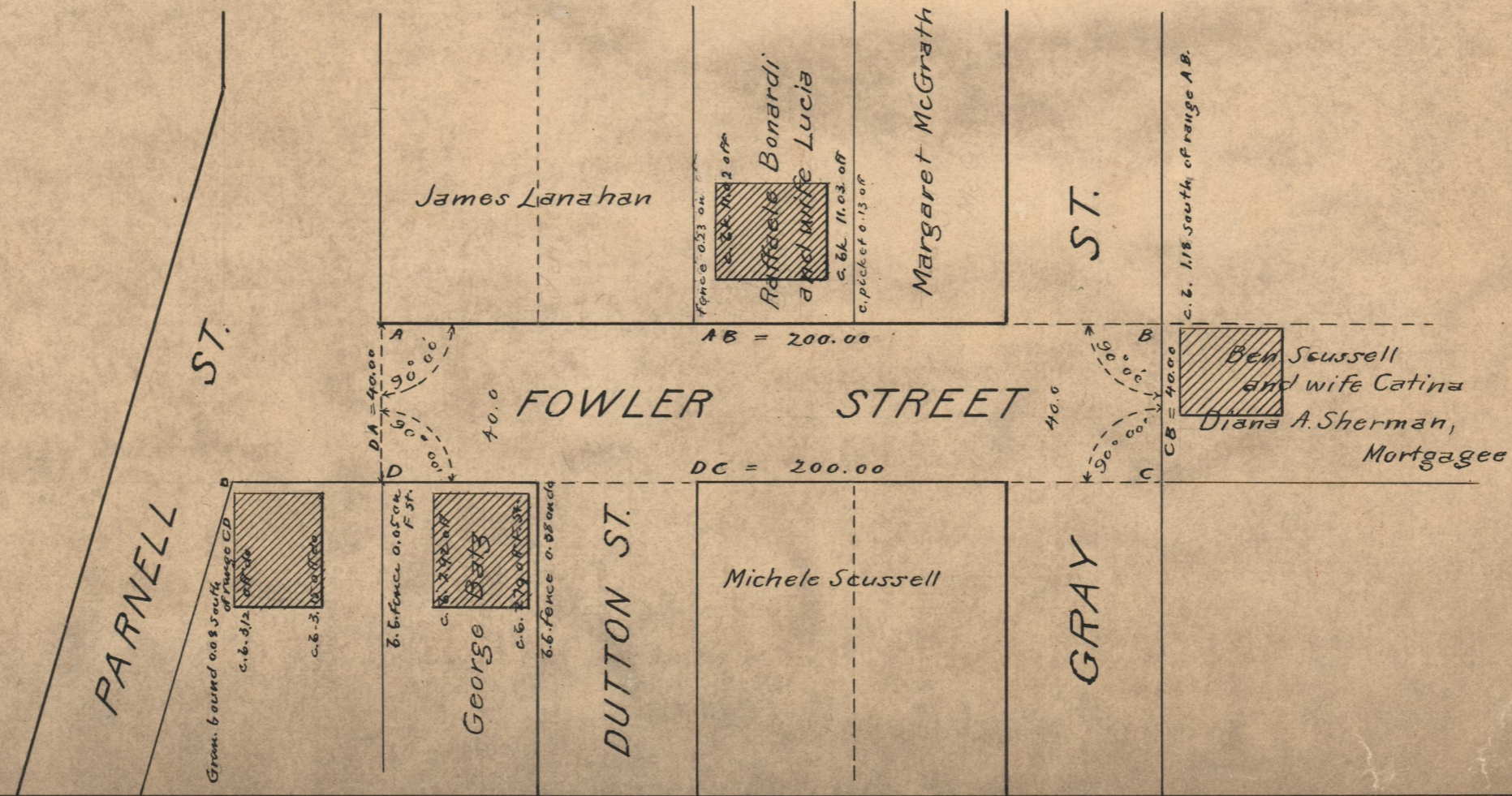
PLAT OF
FOWLER STREET
 AS PLATTED
 FROM PARNELL ST. TO E'LY LINE OF GRAY ST.
 SCALE 40 FEET PER INCH.

Note, The area established as a public highway
 is indicated by the letters ABCD.

The lines thus fixed agree with the plat
 entitled "Plot of House lots belonging to the
 Heirs of John Williams" &c. a copy of which
 is to be found on Plat Card 546 in the office
 of the Recorder of Deeds

Established as a Public Highway
 by Resolution of the
 Board of Aldermen.
 May 6, 1920
 200.00

Witness, _____
 City Clerk.



74
 B-42

OFFICE No. 21758
 DRAWER 74