

PROVIDENCE, R.I.
 CITY ENGINEER'S OFFICE
 STREET LINE DEPT.
 Apr. 14, 1920

044400

PLAT OF LORIMER AVENUE

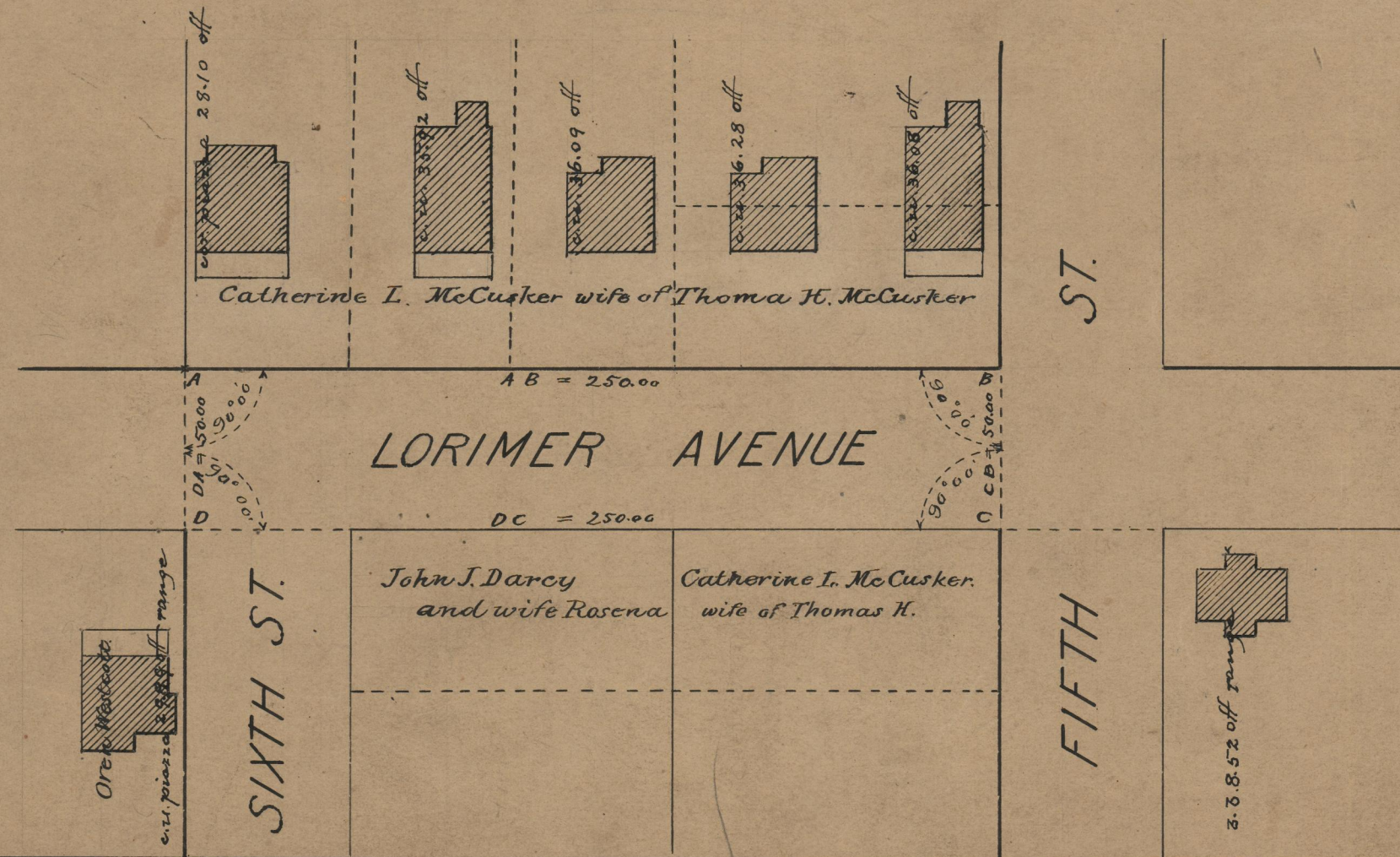
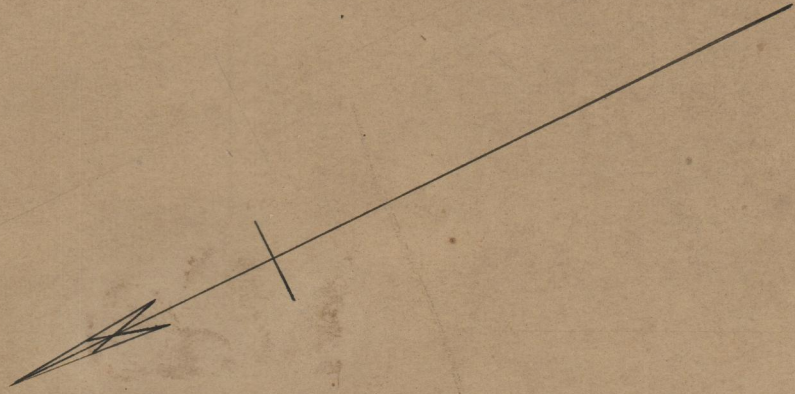
AS PLATTED
 FROM FIFTH ST. TO N'LY LINE OF SIXTH ST.

SCALE 50 FEET PER INCH

Declared and Established a Public Highway
 by Resolution of the
 Board of Aldermen
 April 15, 1920.
 250.00

Note, The area declared and established as a public highway is indicated by the letters ABCD.
 The lines thus fixed conform to the deed recorded in Deed Book 541, page 294 in the office of the Recorder of Deeds and also with the lines defined by "the East Avenue Plat" upon which Lorimer Avenue was originally platted under the name of Narragansett Avenue. See Platcard #479 in the said office of the Recorder of Deeds.

Witness _____
 City Clerk.



74
 B-39

OFFICE No. 21740
 DRAWER " 74
 SHEET " R-25