

044017

PLAT OF  
**MAGDALENE STREET,**  
 AS PLATTED,  
 FROM POCASSET AVE. TO LAUREL HILL AVE.

SCALE 50 FEET PER INCH.

Established as a Public Highway

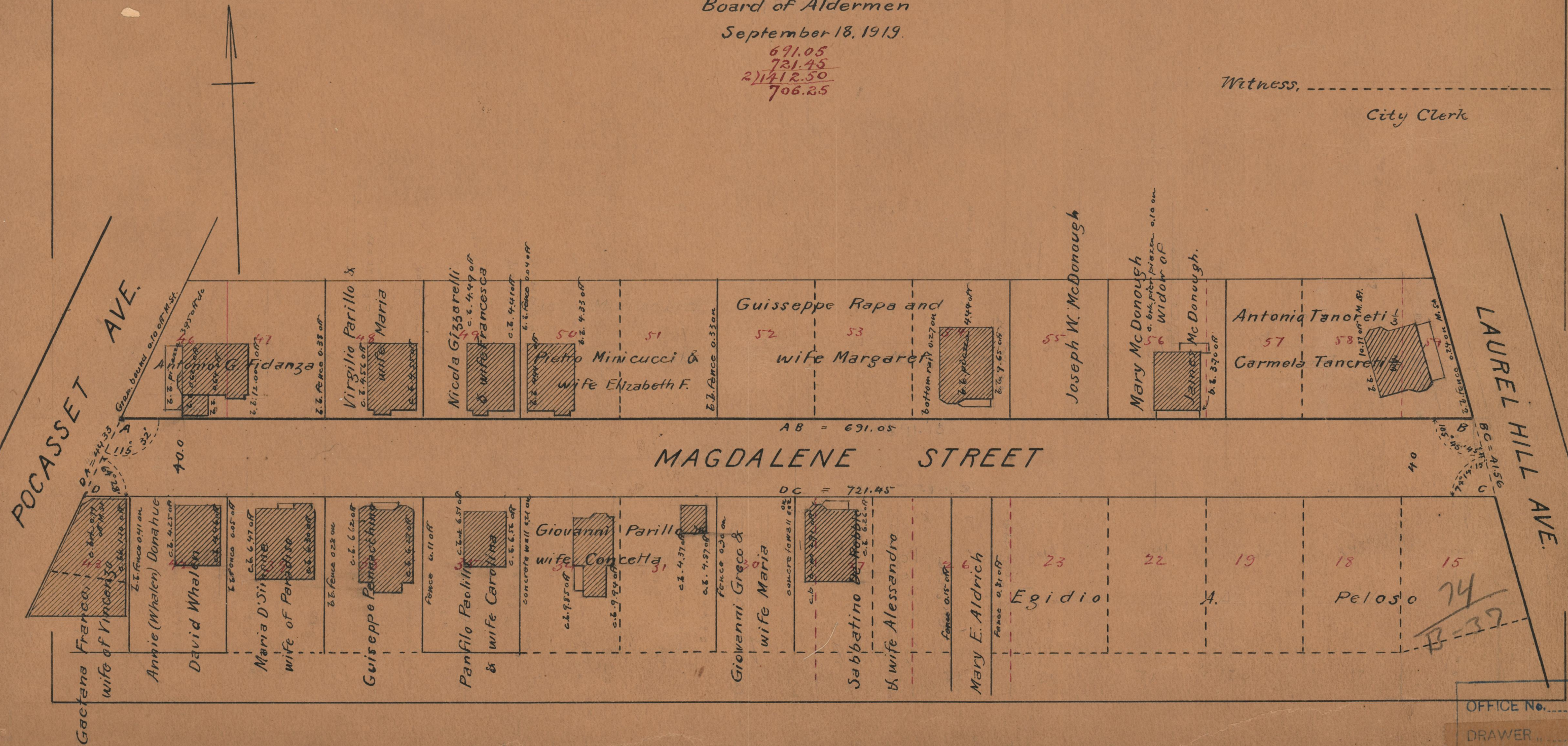
By Resolution of the  
 Board of Aldermen

September 18, 1919.

691.05  
 721.45  
 2)1412.50  
 706.25

Witness, \_\_\_\_\_  
 City Clerk

Note, The limits of the area declared a public highway are indicated by the letters ABCD.  
 The lines thus defined agree with those fixed by the plat entitled "West Providence Grand View Plat of the Miller Land" &c. a copy of which will be found on plat card 822 in the office of the Recorder of Deeds



OFFICE No. 21632  
 DRAWER 74  
 SHEET B-37