

PROVIDENCE, R.I.
 CITY ENGINEER'S OFFICE
 STREET LINE DEPT.
 July 30, 1919

044015

PLAT OF PEMBROKE AVENUE

AS PLATTED
 FROM SMITH ST. TO NORTHERLY LINE
 OF CHAD BROWN ST.
 SCALE 60 FEET PER INCH.

Declared and Established a Public Highway
 by resolution of the
 Board of Aldermen.

September 18, 1919
 449.20
 761.08
 2) 1210.28
 955.14

Witness.....
 City Clerk.

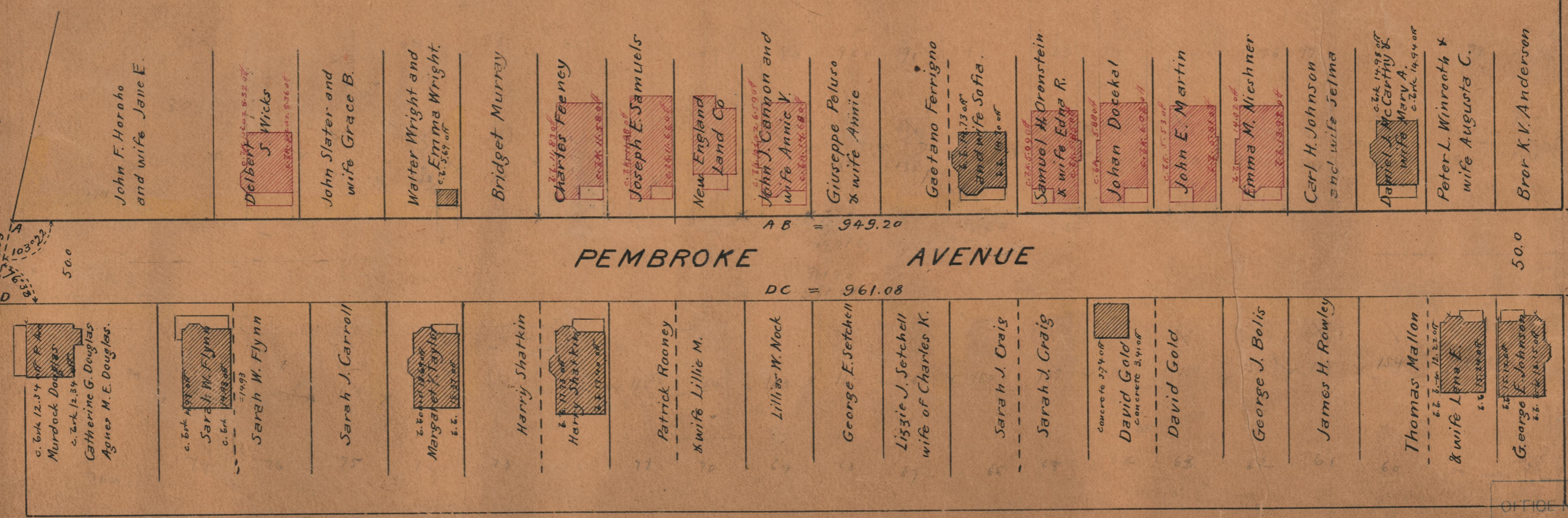
Note, The area declared and established as a public highway is indicated by the letters ABCD. The lines thus fixed conform to the deeds recorded in Deed Book 577, pages 318, 321, 323, 333, 376, 377, 384, 385, 387, 397, 401, 402, 403, 404 and 455 and Deed Book 583, pages 28, 46, 107, 119, 120, 121 and 142, in the office of the Recorder of Deeds, and also with the lines defined by the "Oakland Villa Plat", surveyed in June, 1906, and duly recorded in Plat book 30, page 6 in said office of the Recorder of Deeds.

428

395

SMITH ST

CHAD BROWN ST



George E. Anderson

Thomas E. Doherty

OFFICE No. 21630
 DRAWER 74
 SHEET B-35

74
 B-3